



MEASUREMENT AND TEST REPORT

For
Xiamen Yeastar Information Technology Co., Ltd.
 4th Floor, NO 29 Wanghai Road, 2nd Software Park, Xiamen, China

MODEL: S20

This Report Concerns: <input checked="" type="checkbox"/> Original Report		Equipment Type: IP PBX
Test Engineer:	Safety Engineer: Ryan Zhang <i>Ryan Zhang</i>	
Reviewed By:	Safety Engineer: Jeanne Han <i>Jeanne Han</i>	
Report No.:	R2XM160222050-10	
Revised note:	N/A	
Issue Date:	2016-03-22	
Test Date:	2016-03-07 to 2016-03-22	
Regulation:	COMMISSION REGULATION (EC) No 1275/2008 in conjunction with COMMISSION REGULATION (EU) No 801/2013	
Test Methods:	EN 50564:2011	
Conclusion:	This product complies with COMMISSION REGULATION (EC) No 1275/2008 and COMMISSION REGULATION (EU) No 801/2013.	
Prepared By:	Bay Area Compliance Laboratories Corp. (Shenzhen) 6/F, the 3rd Phase of WanLi Industrial Building, ShiHua Road, FuTian Free Trade Zone, Shenzhen, Guangdong, P.R.China Tel: +86-0755-33320018 Fax: +86-0755-33320008	

The Test Results relate only to the sample tested.

The test report shall not be reproduced except in full, without the written approval of Bay Area Compliance Laboratories Corp. (Shenzhen)

TABLE OF CONTENTS

1 - APPLICANT AND FACTORY INFORMATION3

2 - GENERAL PRODUCT INFORMATION3

3 - TEST SET UP CONFIGURATION5

4 - TEST EQUIPMENT LIST AND DETAILS6

5 - SUMMARY OF TEST RESULT7

6 - APPENDIX A – EUT PHOTOS.....8

FEMVAL

1 - Applicant and factory Information

A. 1 applicant
Company Name Xiamen Yeastar Information Technology Co., Ltd.
Address: 4th Floor,NO 29 Wanghai Road, 2nd Software Park,Xiamen,China

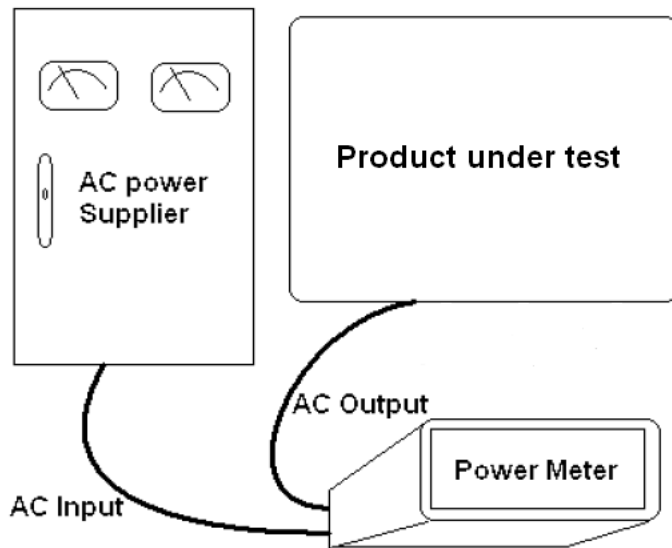
A. 2 factory
Company Name N/A
Address: N/A

2 - General Product Information

Product Characteristics		
Items		Contents:
EUT Input Rating	Input voltage:	100-240V~
	Input current:	0.35A
	Input current:	50/60Hz
Sample No.	Sample 1	S20
	Sample 2	N/A
	Sample 3	N/A
Brand name		Yeastar
Model identification		S20
Model difference		N/A
Version or serial number		N/A
Additional information		N/A

PSU Information and test voltage		
Power type		N/A
Power supply unit	Manufacture	Dongguan Oriental Hero Electrical Factory
	Type	OH-1015A1201000U1-VDE
	Input	100-240V~ 50/60Hz; 350mA,
	Output	12V $\overline{\text{---}}$, 1.0A
	Note	AC ADAPTER
	Efficiency Level	Should comply with Commission Regulation (EC) No. 278/2009.
Test Voltage	230Vac, 50Hz	Apply to sample(s) test.
	115Vac, 60Hz	Didn't apply to sample(s) test.
	100Vac, 50Hz	Didn't apply to sample(s) test.
	100Vac, 60Hz	Didn't apply to sample(s) test.
	220Vac, 50Hz	Didn't apply to sample(s) test.
Supply Voltage	fluctuation	$\leq 0.5\%$
	Harmonic (up to and including 13 th harmonic)	$\leq 2\%$
	crest factor	Selectable for 3 or 6 (≥ 3) for difference range.
	accuracy (V)	$\leq 1\%$
	wattmeter resolution	$\leq 0.5\%$
Frequency reponse of Power Meter	0.00001W($\leq 10W$), 0.001W($10W \leq W \leq 100W$), 0.01W($> 100W$)	
Test room	Temperature($^{\circ}\text{C}$)	24.5
	Humidity(%)	51.8
	illuminance(lx)	$> 300\text{lx}$
	Air speed(m/s)	0.2
Level of confidence at:		95%, K=2
Uncertainty:		UC $\leq 2\%$ (Power > 0.5 W) or 0.01W ($\leq 0.5W$)
Sequence of mode	Off	N/A
	Standby	N/A
	Networked standby	EUT connected to AC mains, the ETHERNET connected to base.

3 - Test set up Configuration



4 - Test Equipment List and Details

Manufacturer	Description	Model	Serial Number	Last Cal. Date	Next Cal. Date
YOKOGAWA	Power Meter	WT210	91K610292	2015-11-03	2016-11-02
EVERFINE	Digital power meter	PF9811	G100696C S1331174	2015-11-03	2016-11-02
KTJ	Temperature Humidity Tester	TA218	-	2016-01-13	2017-01-12
PROVA	Air speed meter	AVM-01	11020109	2013-11-06	2016-11-05

Note: The test equipment list above is calibrated annually.

Statement of Traceability: Bay Area Compliance Laboratories Corp. (Shenzhen) at tests that all calibration has been performed using suitable standards traceable to the National Primary Standards and International System of Units (SI).

5 - SUMMARY OF TEST RESULT

HiNA equipment

Sample No	Vac, Hz	Test result (Networked Standby mode)	Limit (As of 1 January 2015)
Sample 1	230Vac, 50Hz	4.10W	12.0W

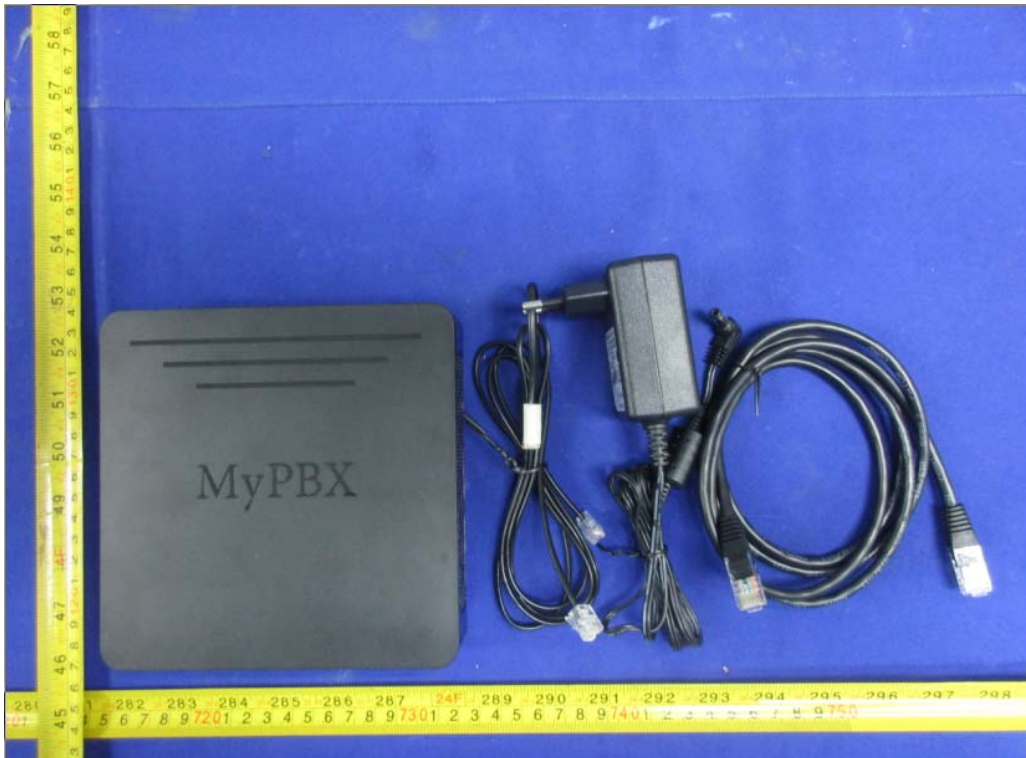
Sample No	Vac, Hz	Test result (Off mode)	Limit (effective date: 7 th January, 2013)
Sample 1	N/A	N/A	0.5W

Sample No	Vac, Hz	Test result (Standby mode)	Limit (effective date: 7 th January, 2013)
Sample 1	N/A	N/A	0.5W

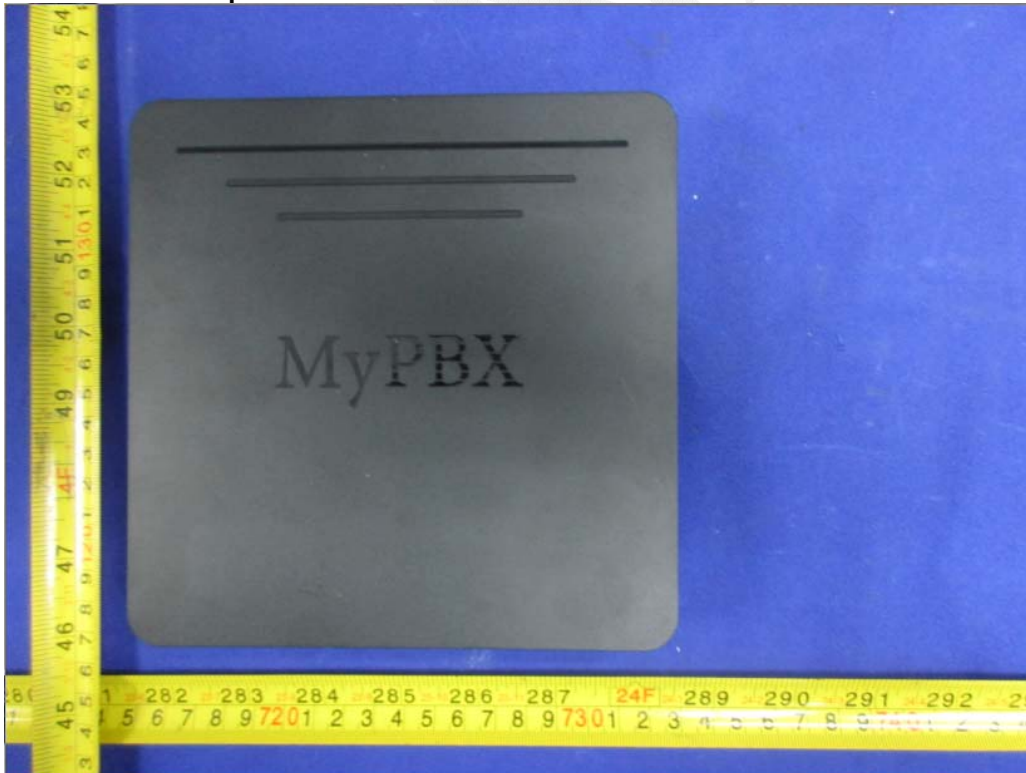
Note: Per regulation, Power consumption of equipment in any off-mode condition shall not exceed 0,50 W . The power consumption of equipment in any condition providing only information or status display, or providing only a combination of reactivation function and information or status display shall not exceed 1.00 W by effective date 7th January, 2013;

6 - Appendix A – EUT photos

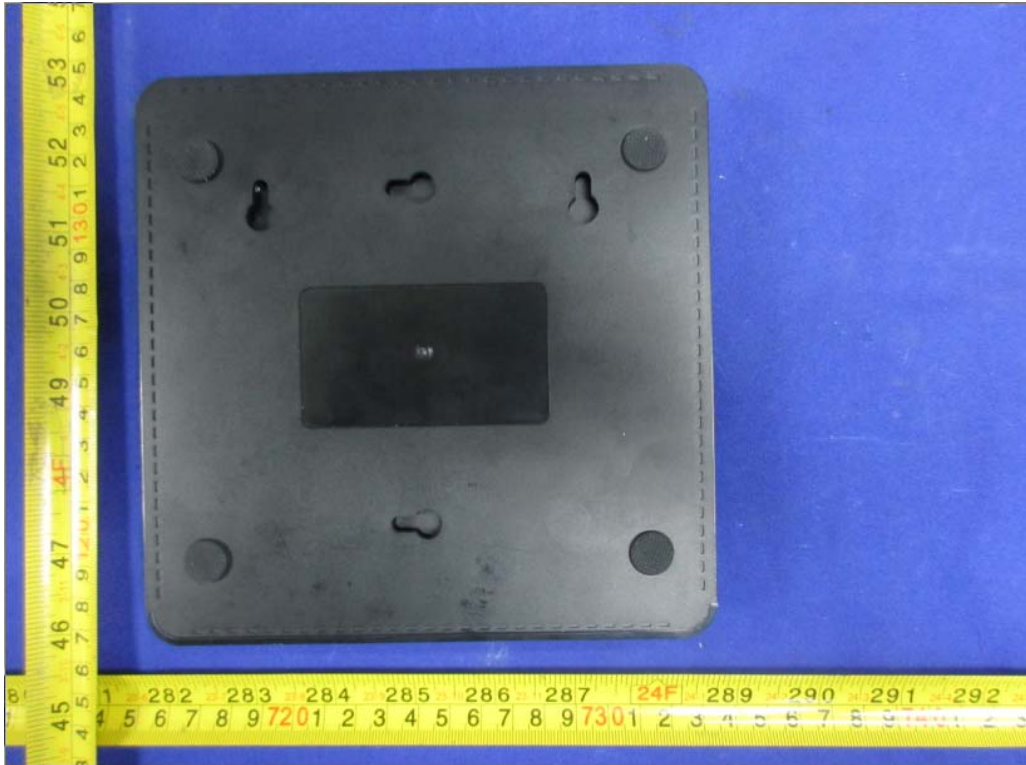
6.1 EUT Photo- Whole view



6.2 EUT Photo- Top view



6.3 EUT Photo- Bottom view



6.4 EUT Photo- Uncover view

