

# INI Viewer and Editor Utility

Version 1.4 and Later



---

## Table of Contents

---

<b>1</b>	<b>Introduction .....</b>	<b>7</b>
<b>2</b>	<b>Installing the INI Viewer &amp; Editor Utility .....</b>	<b>9</b>
<b>3</b>	<b>Updating INI Viewer &amp; Editor Utility .....</b>	<b>13</b>
<b>4</b>	<b>Getting Started .....</b>	<b>15</b>
4.1	Starting the Utility .....	15
4.2	Areas of the Utility Window .....	16
4.3	Toolbar Description .....	17
4.4	Defining Preferences.....	18
4.4.1	Defining Font Types and Sizes.....	19
4.4.2	Configuring Table Column Heading Display.....	21
4.4.3	Configuring Home and End Keys Functionality .....	21
4.4.4	Using the Dictionary.....	22
4.4.5	Configuring Window Size and Position.....	23
4.5	Viewing Version History .....	23
4.6	Viewing Version Number.....	24
4.7	Quitting the Utility .....	24
<b>5</b>	<b>Opening an ini File .....</b>	<b>25</b>
<b>6</b>	<b>Viewing the ini File .....</b>	<b>27</b>
<b>7</b>	<b>Modifying the ini file.....</b>	<b>29</b>
7.1	Accessing Edit Mode.....	29
7.2	Configuring Individual ini File Parameters.....	30
7.2.1	Adding a Parameter.....	30
7.2.2	Assigning a Parameter Value .....	31
7.3	Configuring Table ini File Parameters.....	32
7.3.1	Adding Table Rows.....	32
7.3.2	Configuring Table Row Fields .....	33
7.3.3	Deleting Table Rows.....	34
7.4	Finding or Replacing ini File Strings.....	35
7.4.1	Finding a String.....	35
7.4.2	Replacing a String .....	35

## List of Figures

Figure 2-1: Starting INI Viewer & Editor Setup Wizard .....	9
Figure 2-2: Selecting Destination Location.....	9
Figure 2-3: Selecting Start Menu Folder Screen .....	10
Figure 2-4: Selecting Additional Tasks Screen .....	11
Figure 2-5: Completing the INI Viewer & Editor Setup Wizard.....	11
Figure 3-1: Displaying Update Message .....	13
Figure 3-2: Downloading New Version.....	13
Figure 3-3: Installing the Utility .....	13
Figure 4-1: Starting the Utility .....	15
Figure 4-2: Describing the Utility Window .....	16
Figure 4-3: Settings Dialog Box.....	18
Figure 4-4: ini File Elements for Customizing Font Types and Size .....	19
Figure 4-5: Defining View Mode Font and Size Preferences .....	19
Figure 4-6: Defining Edit Mode Preferences .....	20
Figure 4-7: Using Dictionary .....	22
Figure 4-8: Viewing Version History .....	23
Figure 4-9: Viewing the Version Number .....	24
Figure 6-1: Accessing View Mode.....	27
Figure 7-1: Accessing Edit Mode .....	29
Figure 7-2: Inserting Parameter Name with Auto-completion .....	30
Figure 7-3: Assigning Parameter Value with Auto-completion.....	31
Figure 7-4: Adding Table Row.....	32
Figure 7-5: Modifying a Table Row .....	33
Figure 7-6: Remove a Table Row .....	34
Figure 7-7: Find Dialog Box.....	35
Figure 7-8: Replace Dialog.....	35

## List of Tables

Table 4-1: Description of the INI Viewer & Editor Utility Window .....	16
Table 4-2: Toolbar Description .....	17
Table 4-3: Column Headings Displayed as ini File Parameters.....	21
Table 4-4: Column Headings Displayed as Readable English Names .....	21

## Notice

Information contained in this document is believed to be accurate and reliable at the time of printing. However, due to ongoing product improvements and revisions, AudioCodes cannot guarantee accuracy of printed material after the Date Published nor can it accept responsibility for errors or omissions. Updates to this document can be downloaded from <https://www.audiocodes.com/library/technical-documents>.

This document is subject to change without notice.

Date Published: February-04-2018

## WEEE EU Directive

Pursuant to the WEEE EU Directive, electronic and electrical waste must not be disposed of with unsorted waste. Please contact your local recycling authority for disposal of this product.

## Customer Support

Customer technical support and services are provided by AudioCodes or by an authorized AudioCodes Service Partner. For more information on how to buy technical support for AudioCodes products and for contact information, please visit our Web site at <https://www.audiocodes.com/services-support/maintenance-and-support>.

## Abbreviations and Terminology

Each abbreviation, unless widely used, is spelled out in full when first used.

## Documentation Feedback

AudioCodes continually strives to produce high quality documentation. If you have any comments (suggestions or errors) regarding this document, please fill out the Documentation Feedback form on our Web site at <https://online.audiocodes.com/documentation-feedback>.

# 1 Introduction

This document describes the AudioCodes' INI Viewer & Editor utility (hereafter referred to as the *utility*). This utility simplifies viewing and editing of configuration INI files used by AudioCodes Media Gateways, Session Border Controllers (SBC), and Multi-Service Business Routers (MSBR).

**This page is intentionally left blank.**



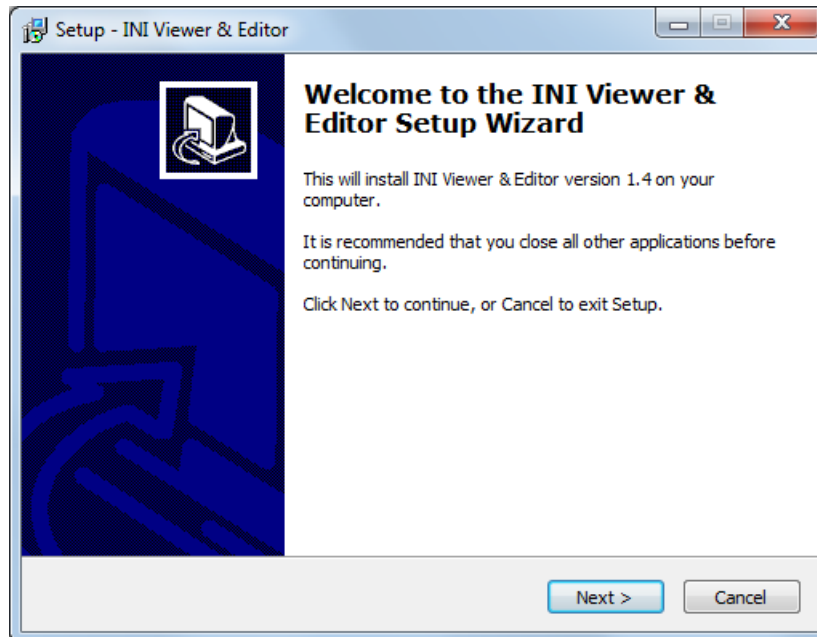
## 2 Installing the INI Viewer & Editor Utility

The following procedure describes how to install the INI Viewer & Editor utility on your PC.

➤ **To install the INI Viewer & Editor utility:**

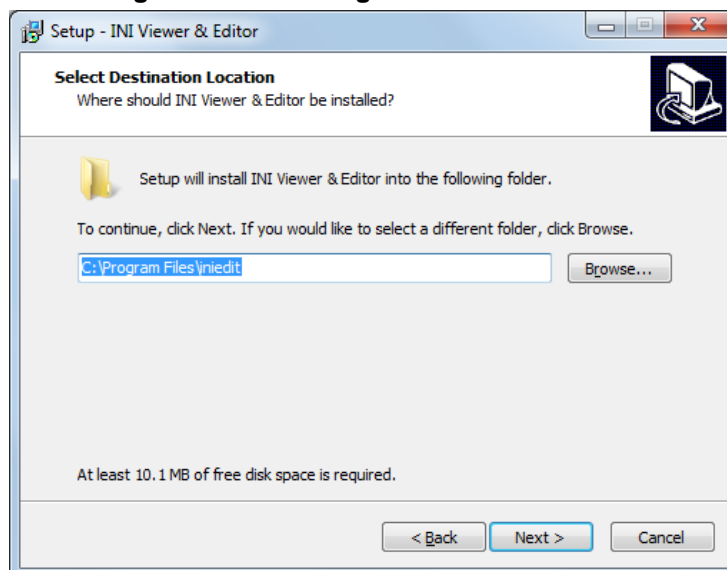
1. Download the INI Viewer & Editor utility software file from AudioCodes Web site at <https://www.audiocodes.com/library/firmware> to your PC.
2. Unzip the downloaded zipped file, and then double-click *iniedit.exe*. If a later version exists, you will be prompted to download the version – see Updating INI Viewer & Editor Utility for more information. Otherwise, the installation wizard begins:

**Figure 2-1: Starting INI Viewer & Editor Setup Wizard**



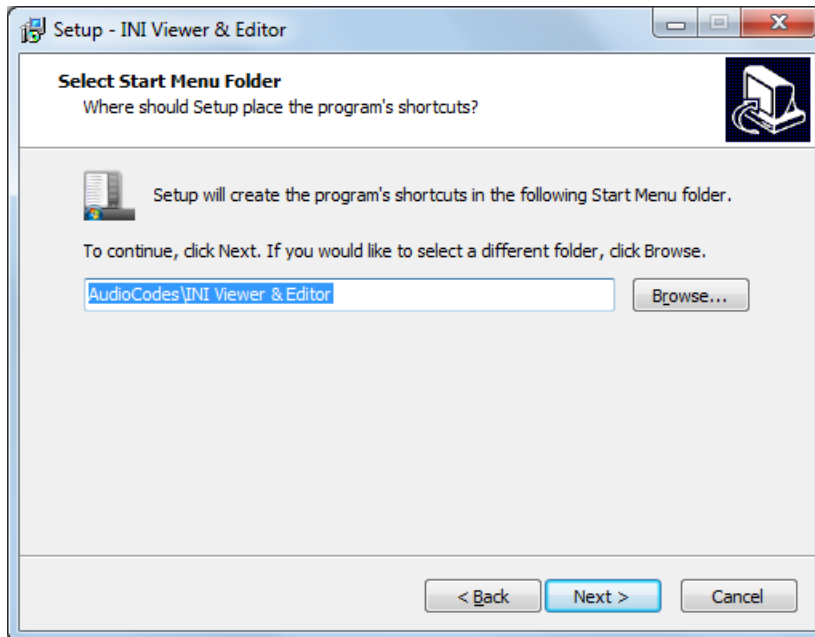
3. Click **Next**; the Select Destination Location window appears:

**Figure 2-2: Selecting Destination Location**



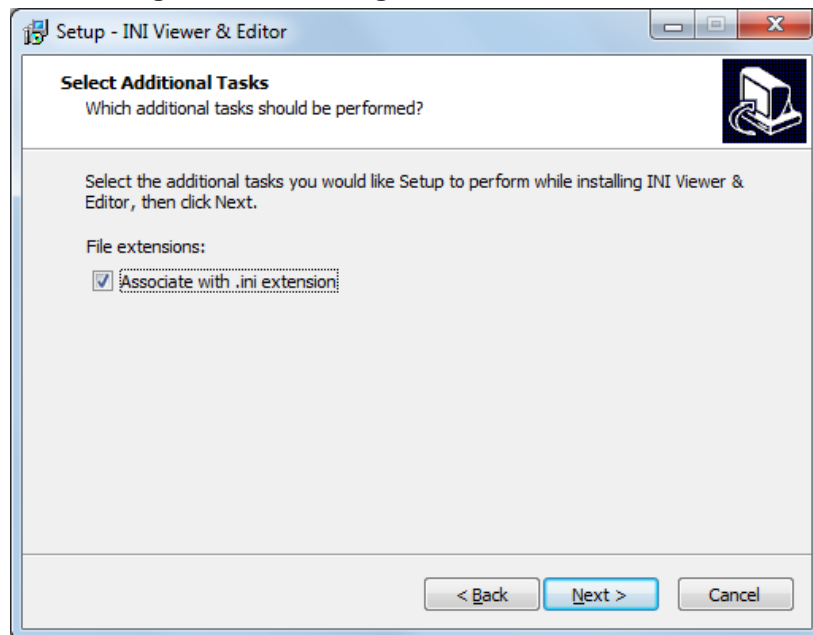
- Click **Next**; the Select Start Menu Folder window appears:

**Figure 2-3: Selecting Start Menu Folder Screen**



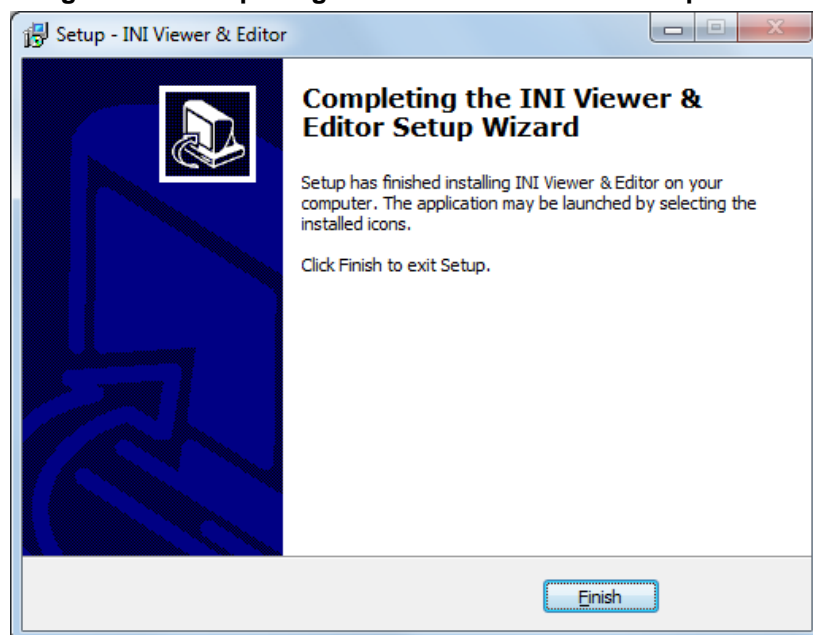
- Click **Next**; the Select Additional Tasks window appears:

**Figure 2-4: Selecting Additional Tasks Screen**



- Click **Next**; the Completing the INI Viewer & Editor Setup Wizard window appears:

**Figure 2-5: Completing the INI Viewer & Editor Setup Wizard**



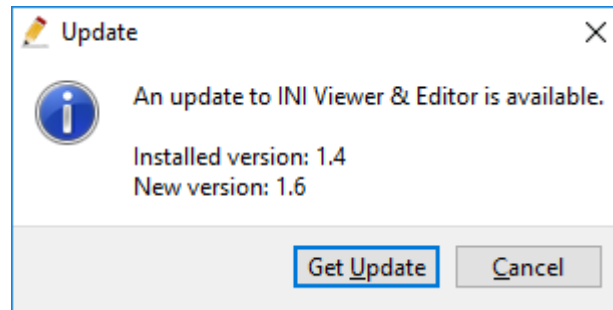
- Click **Finish**.

**This page is intentionally left blank.**

## 3 Updating INI Viewer & Editor Utility

Whenever a new version of the INI Viewer & Editor utility is released, the Update message box is displayed when you start the utility

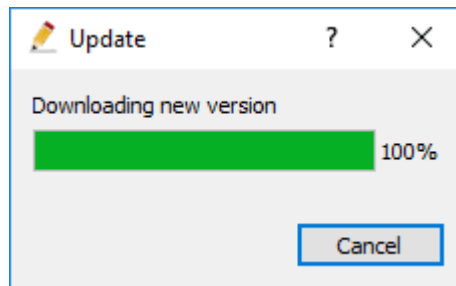
**Figure 3-1: Displaying Update Message**



To proceed with the update, do the following:

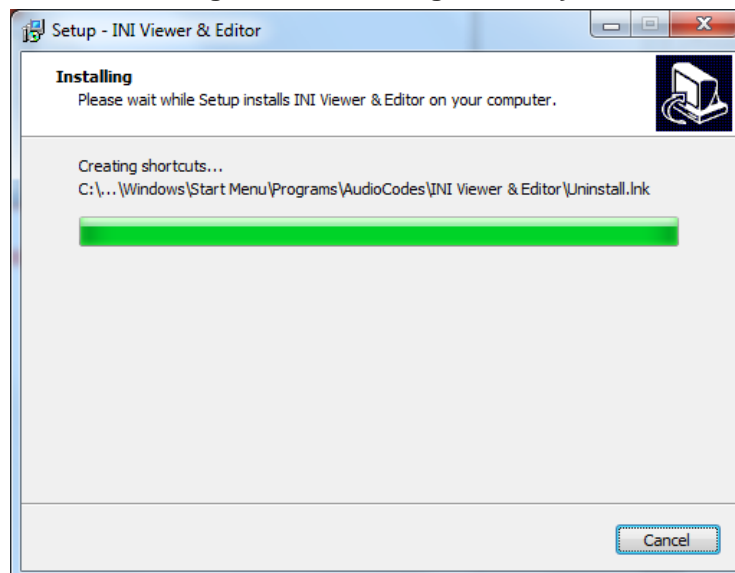
1. Click **Get Update**; the new version of the utility is automatically downloaded and installed.

**Figure 3-2: Downloading New Version**



The setup begins to install the utility; the following screen appears:

**Figure 3-3: Installing the Utility**



2. Restart the utility to activate the new version.

**This page is intentionally left blank.**

## 4 Getting Started

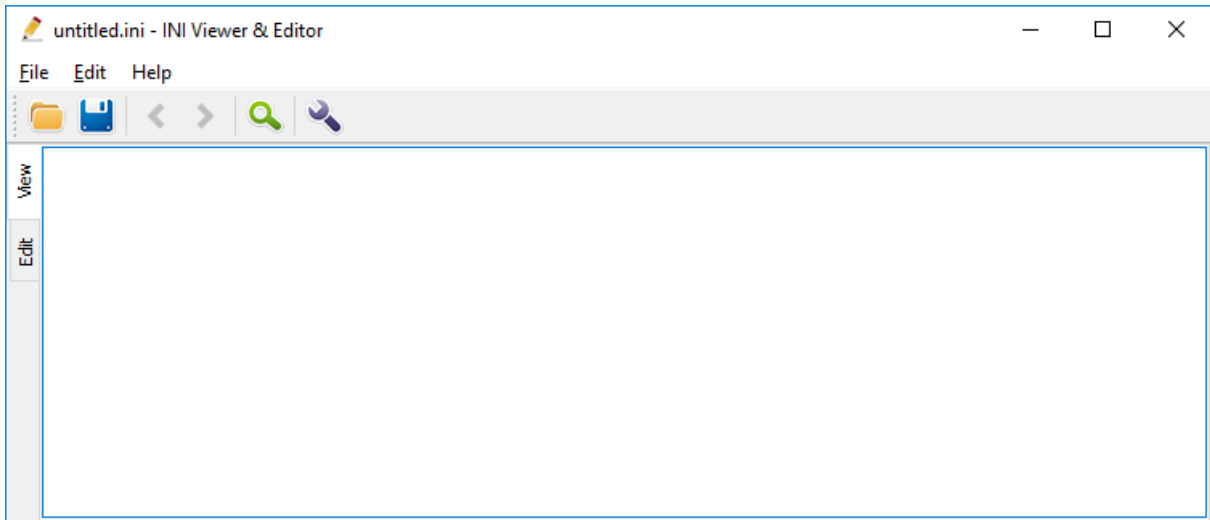
This section provides a description of how to get started in using this utility.

### 4.1 Starting the Utility

The procedure below describes how to start the utility.

- **To start the utility:**
- Open the  **INI Viewer & Editor** utility; the following screen appears:

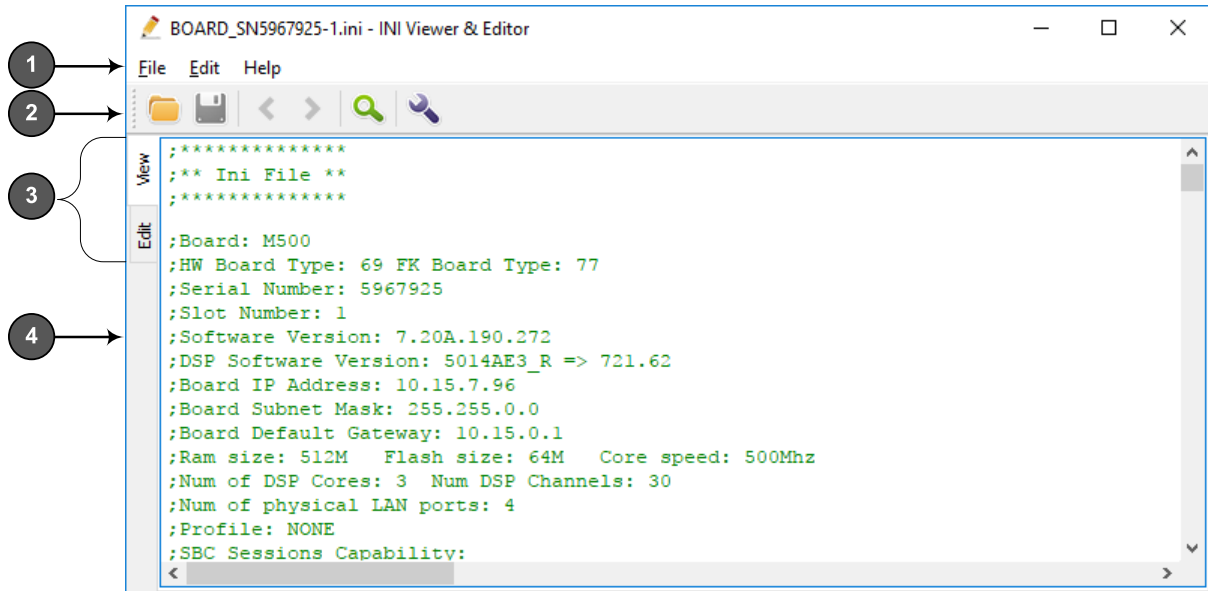
**Figure 4-1: Starting the Utility**



## 4.2 Areas of the Utility Window

The areas of the main utility window are shown below and are described in the subsequent table below.

**Figure 4-2: Describing the Utility Window**



**Table 4-1: Description of the INI Viewer & Editor Utility Window**











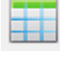

Item #	Description
1	Menu bar
2	Toolbar (displayed and available icons depend on mode)
3	Display tab modes: <ul style="list-style-type: none"> <li>View tab</li> <li>Edit tab</li> </ul>
4	ini File



## 4.3 Toolbar Description

The table below describes the different icons that are displayed on the toolbar menu.

**Table 4-2: Toolbar Description**

Icon	Label	Description
	<b>New</b>	Creates a new file. <b>Note:</b> This icon is available only in Edit mode.
	<b>Open</b>	Opens a file.
	<b>Save</b>	Saves the current file.
	<b>Back / Forward</b>	Navigates you back and forward between tables when you click values in tables that are referenced to other tables. <b>Note:</b> These icons are available only in View mode.
	<b>Undo / Redo</b>	Undoes the most recent action and redoes the most recent action <b>Note:</b> These icons are available only in Edit mode.
	<b>Cut</b>	Deletes selected text. <b>Note:</b> This icon is available only in Edit mode.
	<b>Copy</b>	Copies selected text. <b>Note:</b> This icon is available only in Edit mode.
	<b>Paste</b>	Pastes copied text. <b>Note:</b> This icon is available only in Edit mode.
	<b>Find</b>	Searches a text string.
	<b>Replace</b>	Replaces text. <b>Note:</b> This icon is available only in Edit mode.
	<b>Edit Table</b>	Opens the Edit Table dialog box, which allows you to edit the table in which your cursor is located. <b>Note:</b> This icon is available only in Edit mode.
	<b>Preferences</b>	Opens the Settings dialog box, which allows you to customize the utility.

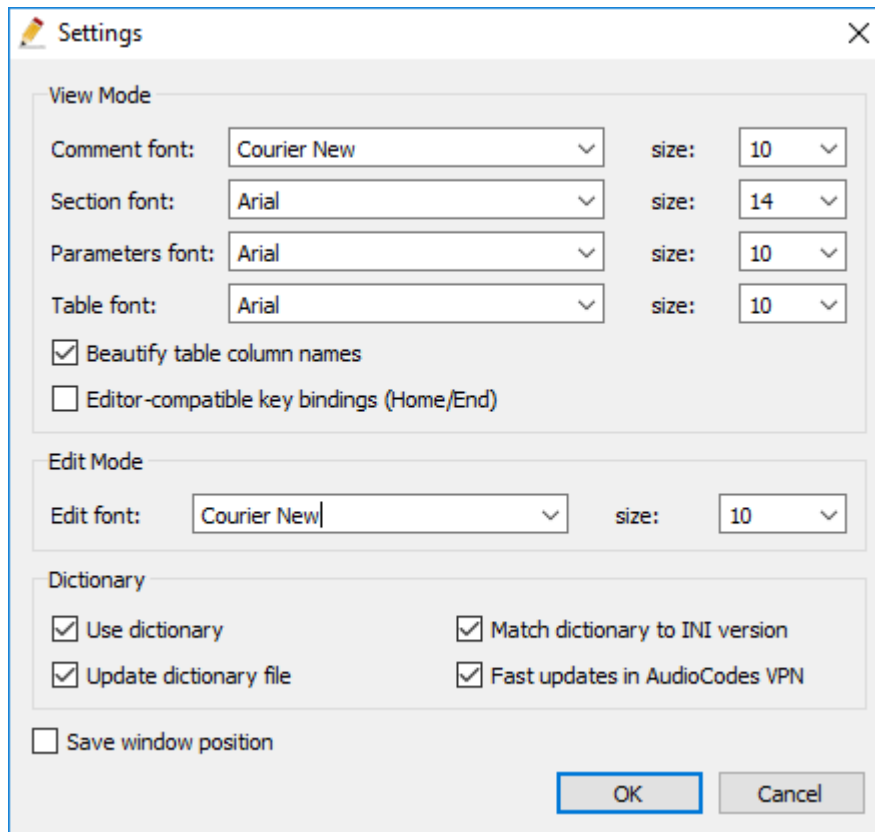
## 4.4 Defining Preferences

You can customize the utility's operation and behavior.

➤ **To define the preferences:**

1. From the File menu, choose **Preferences** (or on the toolbar, click the **Preferences** icon); the Settings dialog appears.

**Figure 4-3: Settings Dialog Box**



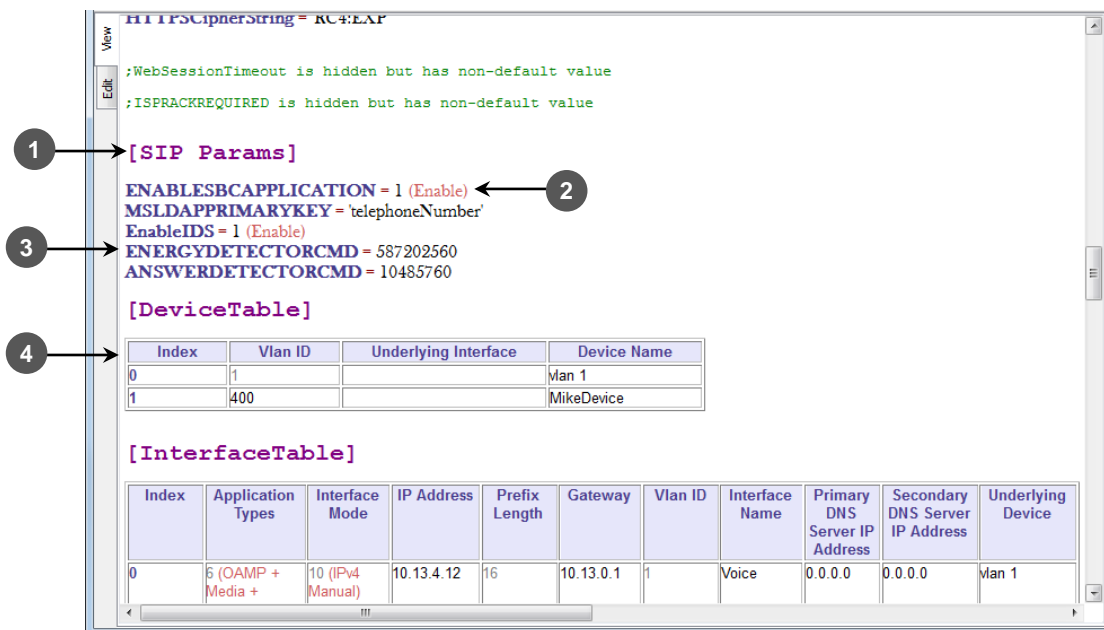
2. Configure the preferences:
  - Defining Font Types and Sizes – See Section 4.4.1 on page 19
  - Configuring Table Column Heading Display – See Section 4.4.2 on page 21
  - Configuring Home and End Keys Functionality – See Section 4.4.3 on page 21
  - Using the Dictionary – See Section 4.4.4 on page 22
  - Configuring Window Size and Position – See Section 4.4.5 on page 23

### 4.4.1 Defining Font Types and Sizes

You can customize font types and sizes for View and Edit modes:

- Edit Mode – A single font size and type can be configured for all text.
- View Mode - Font size and type can be configured for the following displayed elements:
  - Section and table names (Item #1)
  - Comments (Item #2)
  - Standalone parameters and their values (Item #3)
  - Configuration tables (Item #4)

**Figure 4-4: ini File Elements for Customizing Font Types and Size**



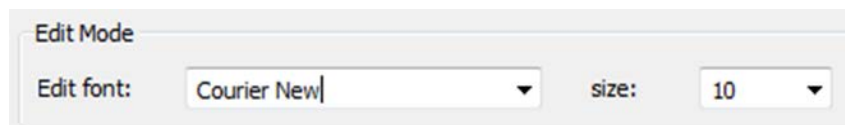
➤ **To define font types and sizes:**

1. In the Settings dialog box, under the **View Mode** group, define the font types and sizes for the following:
  - 'Comment font'
  - 'Section font'
  - 'Parameters font'
  - 'Table font'

**Figure 4-5: Defining View Mode Font and Size Preferences**



2. In the Settings dialog box under the **Edit Mode** group, define the font type and size for the Edit font.

**Figure 4-6: Defining Edit Mode Preferences**

Edit Mode

Edit font: Courier New

size: 10

3. Click **OK**.

## 4.4.2 Configuring Table Column Heading Display

The table column headings can be displayed as an ini file parameter name or as readable English names. For instance, the *EnableProxyKeepAlive* column heading display can be displayed with spaces as *Enable Proxy Keep Alive*. This display applies only to **View** mode.

The two figures below show examples of how column headings are displayed as ini file parameters and as readable English names.

**Table 4-3: Column Headings Displayed as ini File Parameters**

Index	ProxyName	EnableProxyKeepAlive	ProxyKeepAliveTime	ProxyLoadBalancingMethod	IsProxyHotSwap	SRD	ClassificationInput	ProxyRedundancyMode	DNSResolveMethod
0		0 (Disable)	60	0 (Disable)	0 (No)	0	0 (IP only)	-1 (Not Configured)	-1 (Not Configured)

**Table 4-4: Column Headings Displayed as Readable English Names**

Index	Proxy Name	Enable Proxy Keep Alive	Proxy Keep Alive Time	Proxy Load Balancing Method	Is Proxy Hot Swap	SRD	Classification Input	Proxy Redundancy Mode	DNS Resolve Method
0		0 (Disable)	60	0 (Disable)	0 (No)	0	0 (IP only)	-1 (Not Configured)	-1 (Not Configured)

➤ **To configure the table column heading display:**

1. In the Settings dialog box, under the **View** mode group, select the 'Beautify Table Column Names' check box.
2. Click **OK**.

## 4.4.3 Configuring Home and End Keys Functionality

In View mode, the Home and End keys work in up and down directions. These keys can be configured to also advance from the beginning of a line to the end of a line.

➤ **To configure Home and End Keys to advance from beginning to end of a line:**

1. In the Settings dialog box under the **View** mode group, select the 'Editor-compatible key bindings' check box.
2. Click **OK**.

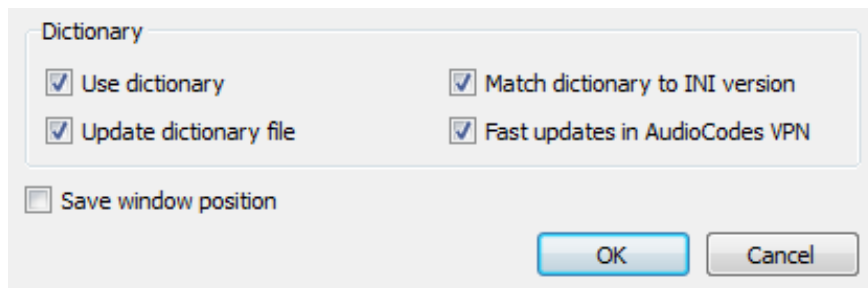
#### 4.4.4 Using the Dictionary

An ini file dictionary is embedded in the utility. It is used to expand enumeration values and highlight incorrect parameter names. The dictionary is version-dependent and is automatically updated each time you start the utility.

➤ **To enable the dictionary:**

1. In the Settings dialog box under the **Dictionary** group, select the 'Use dictionary' check box.
2. Click **OK**.

**Figure 4-7: Using Dictionary**



### 4.4.5 Configuring Window Size and Position

You can save the size and position of the utility window so that when the utility is restarted, it appears the same way it was when it was last used.

➤ **To configure the window size and position:**

1. In the Settings dialog box, select the 'Save window position' check box.
2. Click **OK**.

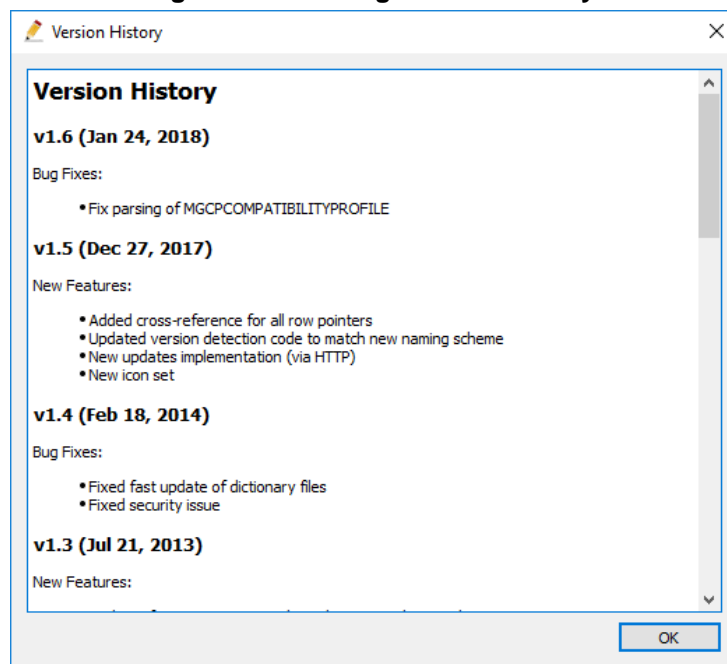
## 4.5 Viewing Version History

You can view a brief description of the features and bug fixes for each version of this utility.

➤ **To view version history:**

1. From the **Help** menu, choose **Version History**; the following screen appears:

**Figure 4-8: Viewing Version History**



2. Click **OK**.

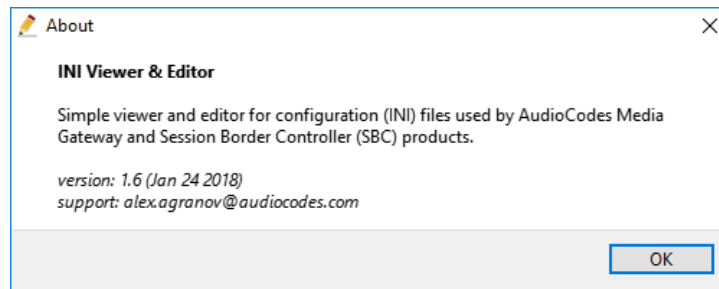
## 4.6 Viewing Version Number

You can view the version number and the creation date of the version.

➤ **To view the version number of the utility:**

1. From the **Help** menu, choose **About** to view the software version of this utility; the following screen appears.

**Figure 4-9: Viewing the Version Number**



2. Click **OK**.

## 4.7 Quitting the Utility

The procedure below describes how to quit the utility.

➤ **To quit the utility:**

- From the **File** menu, choose **Quit**.



## 5 Opening an ini File

Once you have an ini file on your PC, you can open it with the utility.

- **To open an ini file with the utility:**
  - From the **File** menu, choose **Open**.
  - Drag-and-drop the ini file into the utility window
  - Double-click the ini file (INI Viewer & Editor is typically installed as the default application for .ini file extensions, unless this option is explicitly disabled during the installation)

**This page is intentionally left blank.**

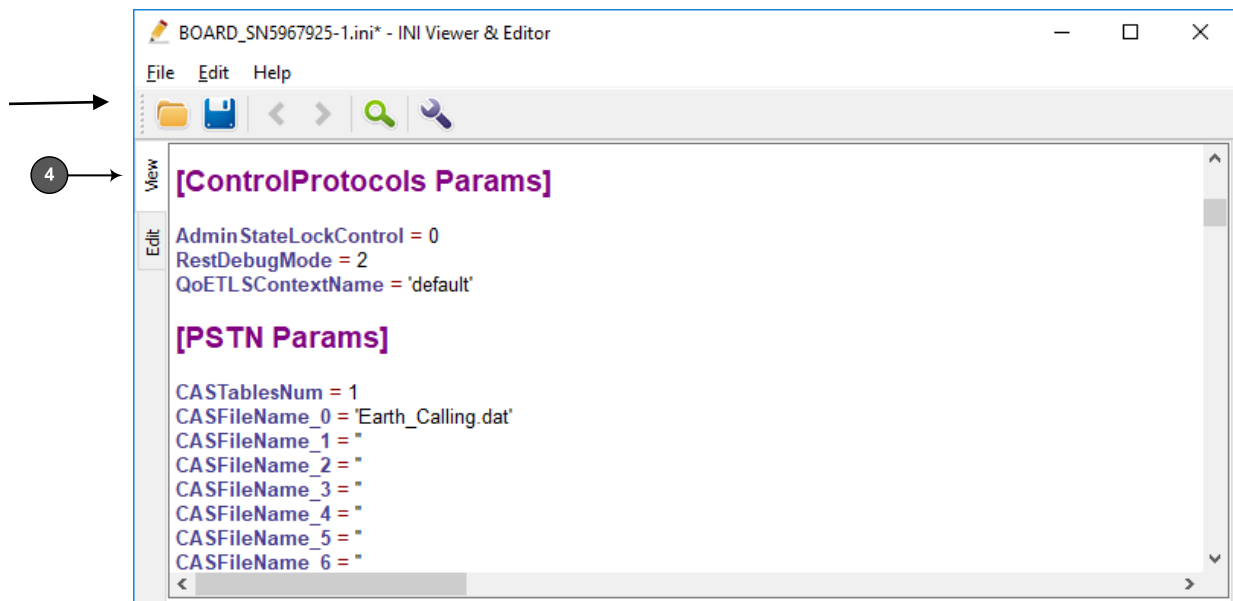
## 6 Viewing the ini File

The viewing function parses the configuration file and presents it in a simple and user-friendly way. The ini file components - comments, sections, parameters and tables - are displayed in different fonts and colors, emphasizing the ini file structure and simplifying its analysis.

➤ **To view the ini file:**

1. Click the **View** tab.

**Figure 6-1: Accessing View Mode**



2. Use the scrolling keys to view the complete ini file.

**This page is intentionally left blank.**

## 7 Modifying the ini file

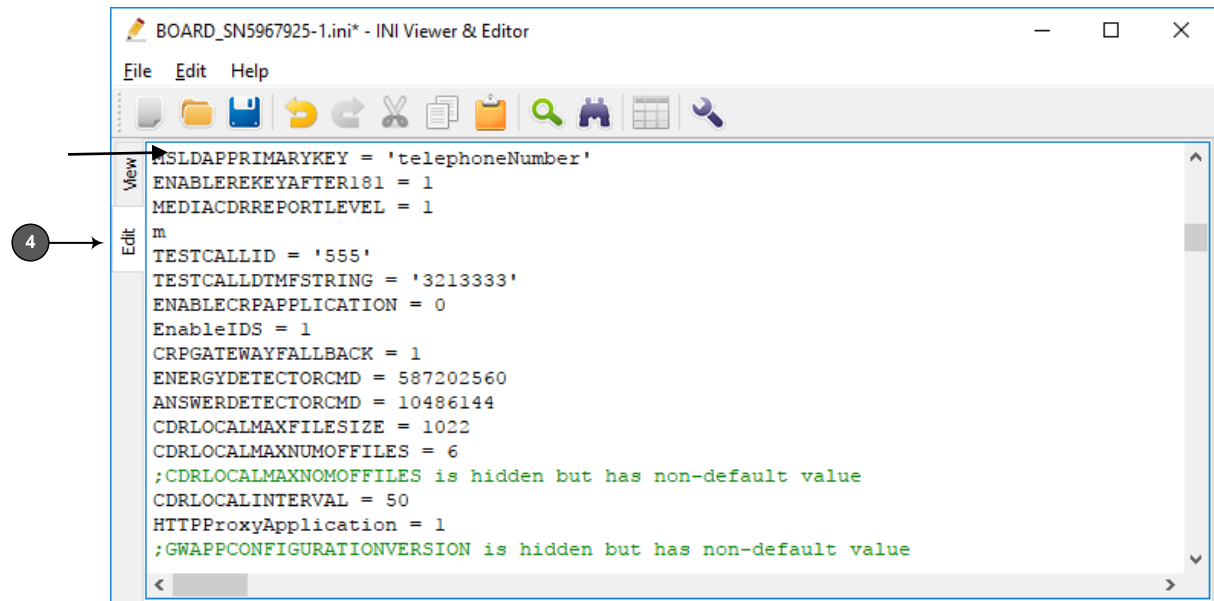
The editing function provides simple text file editing capabilities with basic syntax highlighting. Once you have modified and saved the ini file, you can upload it to the device. Editing can only be done in the Edit mode, which is accessed by clicking the **Edit** tab.

### 7.1 Accessing Edit Mode

Before you can modify the ini file, you must be in **Edit** mode.

- **To access Edit mode:**
- Click the **Edit** tab as shown below.

Figure 7-1: Accessing Edit Mode



## 7.2 Configuring Individual ini File Parameters

This utility allows you to configure individual ini file parameters. This is made easier with an auto-completion feature that helps you enter names and parameters quickly by displaying suggestions based on partial input. You can type the first few letters of parameter names, parameter values, table names or table field names followed by the Ctrl and Space key combination. A drop-down list appears with all possible names or values that begin with the initial letters entered for selection.



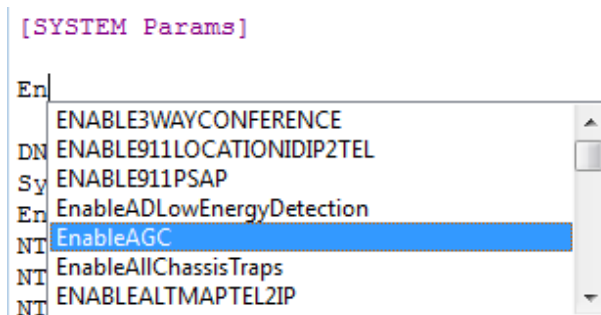
**Note:** Parameters and values that are displayed with auto-completion, but do not appear in the User Manual, are not officially supported and should not be used.

### 7.2.1 Adding a Parameter

The following describes how to add a parameter using Auto-completion.

- **To add a parameter using auto-completion:**
  1. Access the Edit mode, by clicking the **Edit** tab.
  2. On an empty line, type the first letter or letters of the parameter, and then press **Ctrl+Space** key combination.
  3. Select the required parameter name with the up/down arrow key, and then press **Enter**.

**Figure 7-2: Inserting Parameter Name with Auto-completion**



## 7.2.2 Assigning a Parameter Value

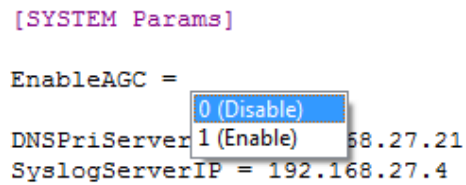
The following describes how to assign a parameter value using auto-completion.

➤ **To assign a parameter value using auto-completion:**

1. Access the Edit mode, by clicking the **Edit** tab.
2. On the appropriate line in the ini file, enter the parameter name, followed by " = " and then the **Ctrl+Space** key combination.
3. Select the required parameter value with the up/down arrow key.
4. Press **Enter** to complete the action.

**Figure 7-3: Assigning Parameter Value with Auto-completion**

```
[SYSTEM Params]
EnableAGC =
DNSPriServer 1 (Enable) 68.27.21
SyslogServerIP = 192.168.27.4
```

A screenshot of a text editor window showing an ini file. The file content is as follows: [SYSTEM Params], EnableAGC =, DNSPriServer 1 (Enable) 68.27.21, and SyslogServerIP = 192.168.27.4. A dropdown menu is open over the '1 (Enable)' part of the 'DNSPriServer' line, showing two options: '0 (Disable)' and '1 (Enable)'. The '1 (Enable)' option is currently selected and highlighted in blue.

## 7.3 Configuring Table ini File Parameters

This section describes how to configure tables.

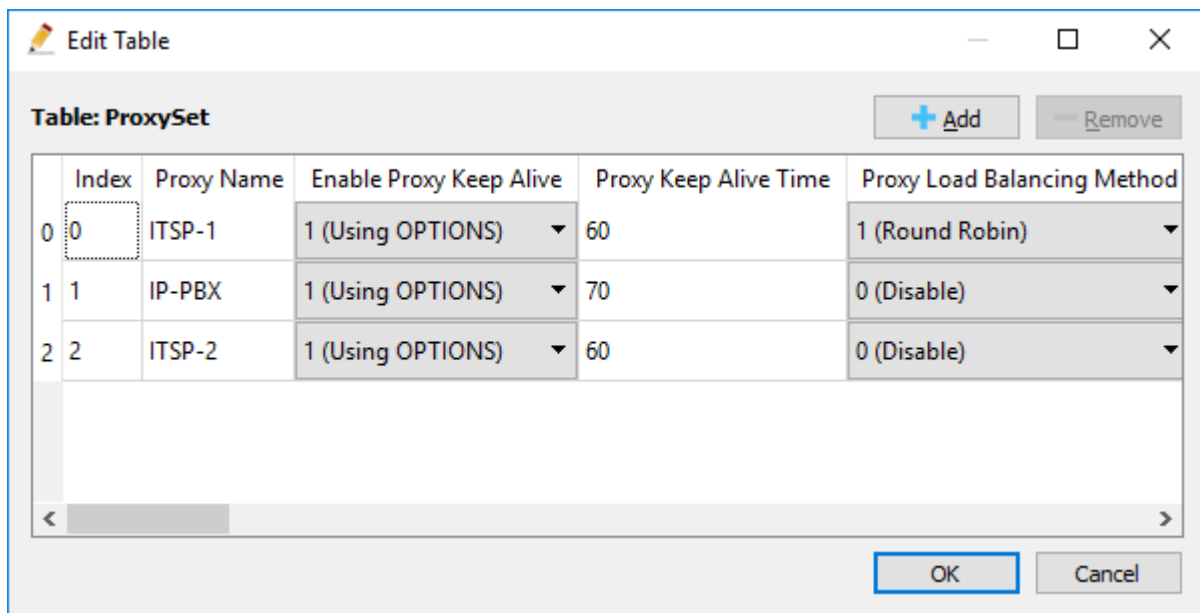
### 7.3.1 Adding Table Rows

You can add rows to tables.

➤ **To add table row indexes**

1. Access the Edit mode, by clicking the **Edit** tab.
2. Place your cursor anywhere in the table, and then from the Edit menu, choose **Edit Table** (or on the toolbar. Click the **Edit Table** icon).

**Figure 7-4: Adding Table Row**



3. Click the **Add** button, and then configure the new row as desired.
4. Click **OK**.



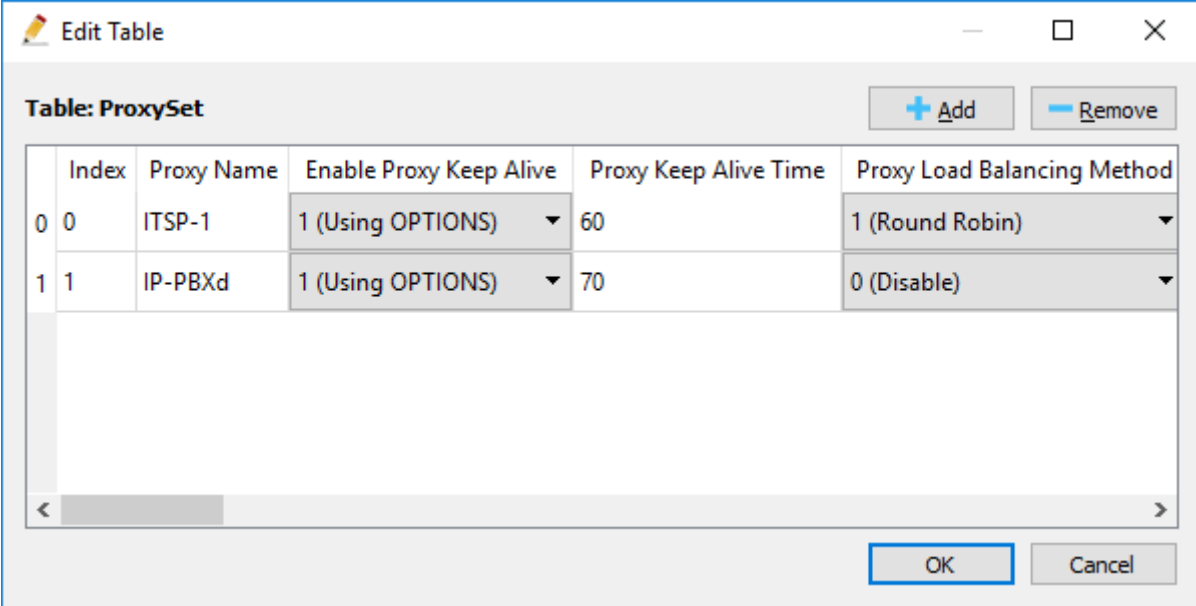
### 7.3.2 Configuring Table Row Fields

You can modify the values in table rows.

➤ **To enter table row fields:**

1. Access the Edit mode, by clicking the **Edit** tab.
2. Place your cursor anywhere in the table, and then from the Edit menu, choose **Edit Table** (or on the toolbar. Click the **Edit Table** icon).

**Figure 7-5: Modifying a Table Row**



The screenshot shows a dialog box titled "Edit Table" with a pencil icon. Inside, there is a table titled "Table: ProxySet". The table has five columns: "Index", "Proxy Name", "Enable Proxy Keep Alive", "Proxy Keep Alive Time", and "Proxy Load Balancing Method". There are two rows of data. The first row has Index 0, Proxy Name ITSP-1, Enable Proxy Keep Alive set to 1 (Using OPTIONS), Proxy Keep Alive Time 60, and Proxy Load Balancing Method 1 (Round Robin). The second row has Index 1, Proxy Name IP-PBXd, Enable Proxy Keep Alive set to 1 (Using OPTIONS), Proxy Keep Alive Time 70, and Proxy Load Balancing Method 0 (Disable). Above the table are "+ Add" and "- Remove" buttons. Below the table are "OK" and "Cancel" buttons.

	Index	Proxy Name	Enable Proxy Keep Alive	Proxy Keep Alive Time	Proxy Load Balancing Method
0	0	ITSP-1	1 (Using OPTIONS)	60	1 (Round Robin)
1	1	IP-PBXd	1 (Using OPTIONS)	70	0 (Disable)

3. Make your changes as desired, and then click **OK**.

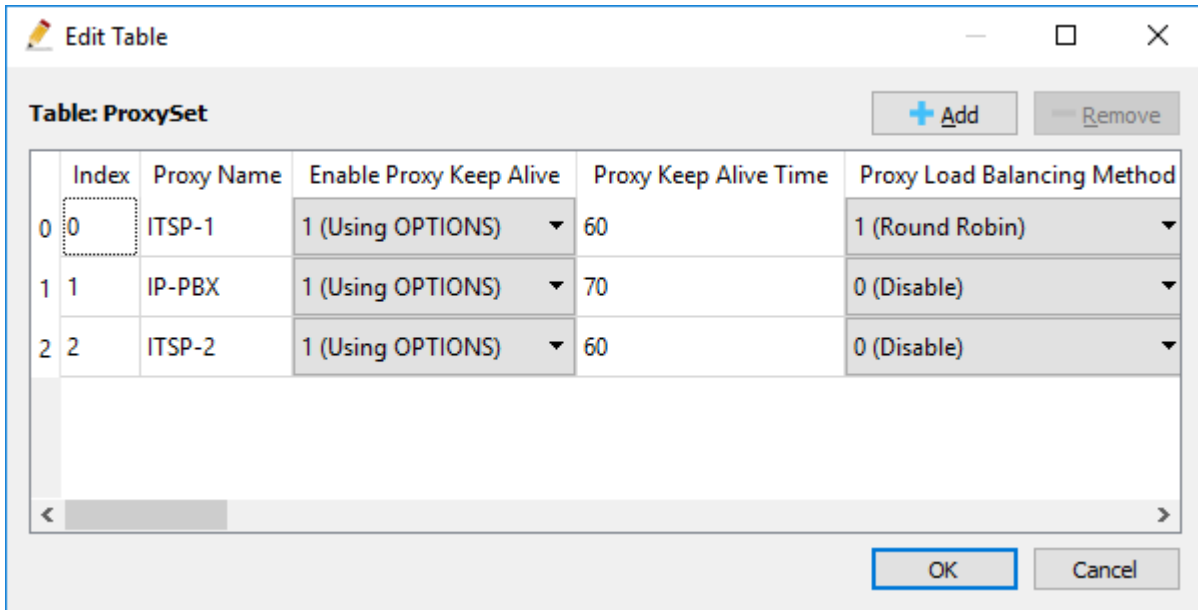
### 7.3.3 Deleting Table Rows

You can delete table rows.

➤ **To delete a table row index:**

1. Access the Edit mode, by clicking the **Edit** tab.
2. Place your cursor anywhere in the table, and then from the Edit menu, choose **Edit Table** (or on the toolbar. Click the **Edit Table** icon).

**Figure 7-6: Remove a Table Row**



3. Click the Index that you want to delete, and then click **Remove**.
4. Click **OK** to commit table changes.

## 7.4 Finding or Replacing ini File Strings

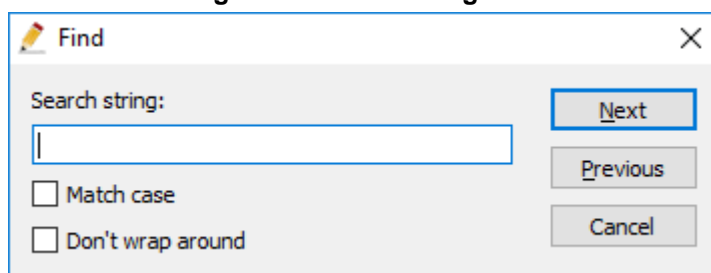
You can search for strings and replace them if desired.

### 7.4.1 Finding a String

You can search for strings.

1. Open the Find dialog box:
  - From the **Edit** menu, choose **Find**.
  - Use the **Ctrl+F** key combination.
  - On the toolbar, click the **Find** icon.

Figure 7-7: Find Dialog Box



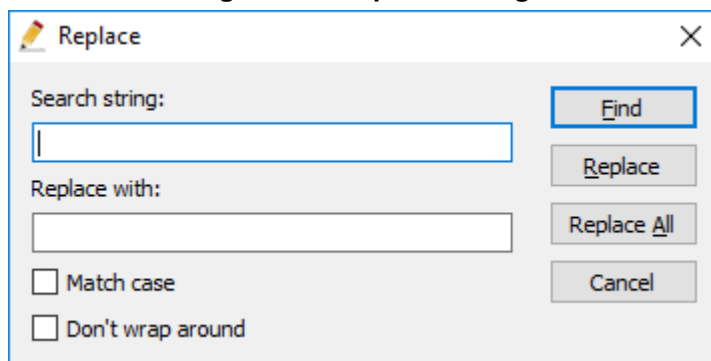
2. In the 'Search string' field, enter the string to be searched, and then click **Next**.
3. Click **Next** again if you are searching for more occurrences of the search string.

### 7.4.2 Replacing a String

You can find and replace strings.

1. Access the Edit mode, by clicking the **Edit** tab.
2. Open the Replace dialog box:
  - From the **Edit** menu, choose **Replace**.
  - Use the **Ctrl +H** key combination.
  - On the toolbar, click the **Replace** icon.

Figure 7-8: Replace Dialog



3. In the 'Search string' field, enter the string to be replaced.
4. In the 'Replace with' field, enter the replacement string, and then click **Find**.
5. Click **Replace** to replace the text.

**International Headquarters**

1 Hayarden Street,  
Airport City  
Lod 7019900, Israel  
Tel: +972-3-976-4000  
Fax: +972-3-976-4040

**AudioCodes Inc.**

27 World's Fair Drive,  
Somerset, NJ 08873  
Tel: +1-732-469-0880  
Fax: +1-732-469-2298

**Contact us:** <https://www.audiocodes.com/corporate/offices-worldwide>

**Website:** <https://www.audiocodes.com/>

©2018 AudioCodes Ltd. All rights reserved. AudioCodes, AC, HD VoIP, HD VoIP Sounds Better, IPmedia, Mediant, MediaPack, What's Inside Matters, OSN, SmartTAP, User Management Pack, VMAS, VoIPerfect, VoIPerfectHD, Your Gateway To VoIP, 3GX, VocaNom, AudioCodes One Voice and CloudBond are trademarks or registered trademarks of AudioCodes Limited. All other products or trademarks are property of their respective owners. Product specifications are subject to change without notice.

Document #: LTRT-30543

