

SIP Phone Support

VoIP Media Gateways

Microsoft Hyper-Virtual Machine

Configuration Note

Installing SPS on Microsoft® Hyper-V™



Version 2.40

May 2012

Document # LTRT-00831

Table of Contents

- 1 Introduction7**
- 2 Enabling Microsoft Hyper-V9**
- 3 Obtaining the IP Address of the Virtual Machine17**
- 4 Installing the SPS on the Virtual Machine.....21**

List of Figures

Figure 2-1: Microsoft Hyper V-Manager	9
Figure 2-2: New Virtual Machine Wizard - Before You Begin	9
Figure 2-3: New Virtual Machine Wizard - Specify Name and Location	10
Figure 2-4: New Virtual Machine Wizard - Assign Memory.....	10
Figure 2-5: New Virtual Machine Wizard - Configure Networking.....	11
Figure 2-6: New Virtual Machine Wizard - Connect Virtual Hard Disk	11
Figure 2-7: New Virtual Machine Wizard - Open Window.....	12
Figure 2-8: New Virtual Machine Wizard – Completing the New Virtual Machine Wizard	12
Figure 2-9: Microsoft Hyper-V Manager Window	13
Figure 2-10: Settings for SPS.....	14
Figure 2-11: Automatic Start Action	15
Figure 3-1: Microsoft Hyper-V Manager Window – SPS	17
Figure 3-2: Ctrl+Alt+Del Window	17
Figure 3-3: Administrator Login Window	18
Figure 3-4: Windows Main Screen	18
Figure 3-5: Run Window.....	19
Figure 3-6: Administrator Window	19
Figure 3-7: IP Config	19

Notice

This document describes the installation procedure for uploading the AudioCodes SPS (SIP Phone Support) on a Microsoft Hyper-V Virtual Machine.

Information contained in this document is believed to be accurate and reliable at the time of printing. However, due to ongoing product improvements and revisions, AudioCodes cannot guarantee the accuracy of printed material after the Date Published nor can it accept responsibility for errors or omissions. Updates to this document and other documents can be viewed at <http://www.audiocodes.com/downloads>.

© Copyright 2012 AudioCodes Ltd. All rights reserved.

This document is subject to change without notice.

Date Published: May-14-2012

Trademarks

AudioCodes, AC, AudioCoded, Ardito, CTI2, CTI², CTI Squared, HD VoIP, HD VoIP Sounds Better, InTouch, IPmedia, Mediant, MediaPack, NetCoder, Netrake, Nuera, Open Solutions Network, OSN, Stretto, TrunkPack, VMAS, VoicePacketizer, VoIPerfect, VoIPerfectHD, What's Inside Matters, Your Gateway To VoIP and 3GX are trademarks or registered trademarks of AudioCodes Limited. All other products or trademarks are property of their respective owners.

WEEE EU Directive

Pursuant to the WEEE EU Directive, electronic and electrical waste must not be disposed of with unsorted waste. Please contact your local recycling authority for disposal of this product.

Customer Support

Customer technical support and service are generally provided by AudioCodes' Distributors, Partners, and Resellers from whom the product was purchased. For technical support for products purchased directly from AudioCodes, or for customers subscribed to AudioCodes Customer Technical Support (ACTS), contact support@audiocodes.com



Note: Throughout this guide, the term *gateway* refers to AudioCodes' Mediant 1000 E-SBC device.



Warning: The Mediant 1000B and the relevant additional components – OSN and MPM – are supplied as sealed units and must only be serviced by qualified service personnel.



Note: Wherever 'network' appears in this manual, it refers to LAN, WAN, etc. accessed via the OSN's Ethernet interface.

Related Documentation

Manuals Name
LTRT- 28800 SPS Lync Initial Startup Procedure

1 Introduction

The SIP Phone Support (SPS) system allows you to use your phone as a normal extension whereby you can call other extensions, call outside lines, and receive incoming calls. The SPS system also provides advanced capabilities to manage your extension using special dial codes such as setting your extension to busy, dialing your voicemail etc.

The document explains how to enable Microsoft Hyper-V. Upon completion, the following tasks must be completed. Refer to the *LTRT-28802 SPS for Lync Quick Start Guide* for more information on the following steps:

1. Loading the SPS image from the Disk-on-Key or from the network
2. Activating the Windows operating system license
3. Installing the SPS in the Lync environment
4. Activating the SPS permanent license



Note: In order to activate the SPS permanent license you need to do the following:

1. Create the C2V (Client to Vendor) file using the SPS Web Admin, the C2V file is the installed system signature. For more instructions how to generate the C2V file please refer to the “Activating the SPS License” section in the SPS for Lync Quick Start Guide.
2. Send the C2V file to AudioCodes support with the SPS purchase order (PO) number.
3. Receive the V2C (Vendor to Client) file from AudioCodes support. The V2C is the SPS permanent license.
4. Activate the SPS with the permanent license.

This document describes the procedures necessary to install the SPS on a Microsoft Hyper-V Virtual Machine. Before doing so, you will need to run the following:

- [Enabling Microsoft Hyper-V](#)
- [Obtaining the IP Address of the Virtual Machine](#)



Note: Before running the following procedures, ensure you have the SPS installation DVD provided by AudioCodes. This DVD contains the *vhd* file that you will need for Step 1 on Page 9.



Note: SPS license is associated with the installed system serial number. Installed and licensed SPS system must not be cloned to a different Virtual Machine instance. By doing that the SPS license will be disabled.

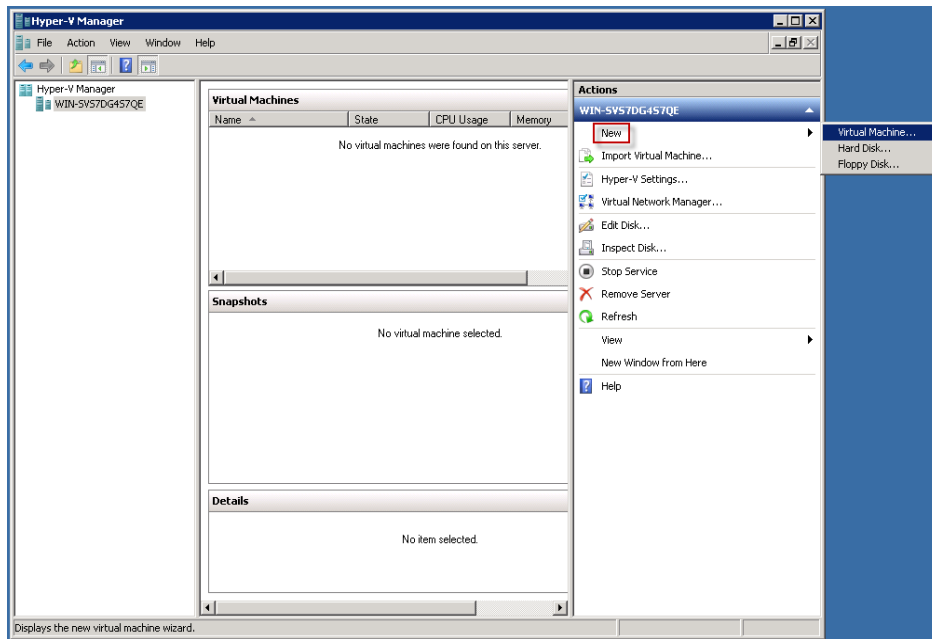
Reader's Notes

2 Enabling Microsoft Hyper-V

The following steps describe the process for enabling Microsoft Hyper-V.

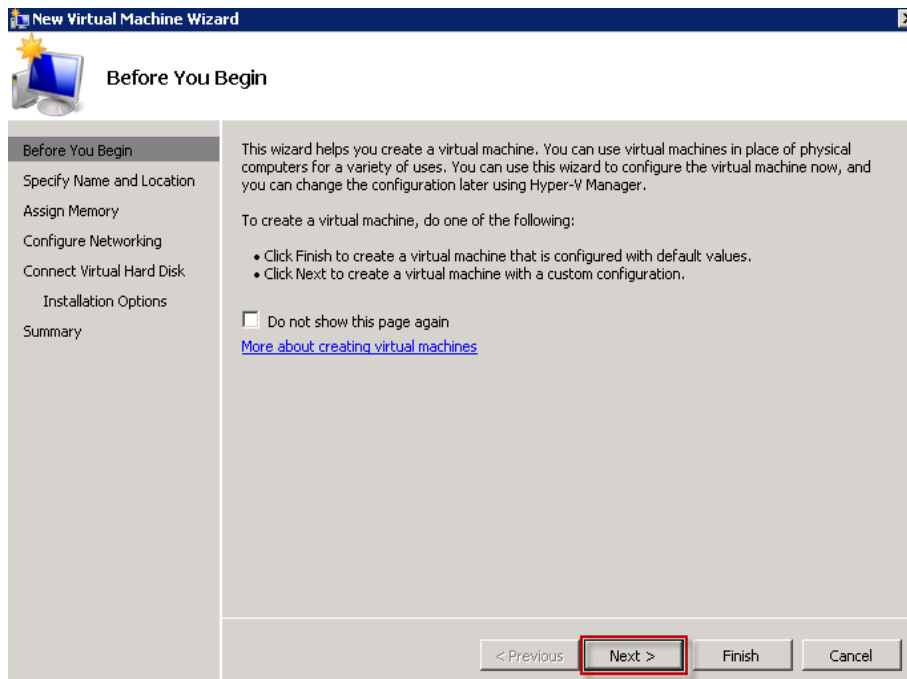
1. Copy the SPS *vhd* file that you received from AudioCodes, to your preferred location.
2. Open the Microsoft Hyper-V Manager window (**Start > Administrative Tools > Hyper-V Manager**); the Microsoft Hyper-V Manager window appears.

Figure 2-1: Microsoft Hyper V-Manager



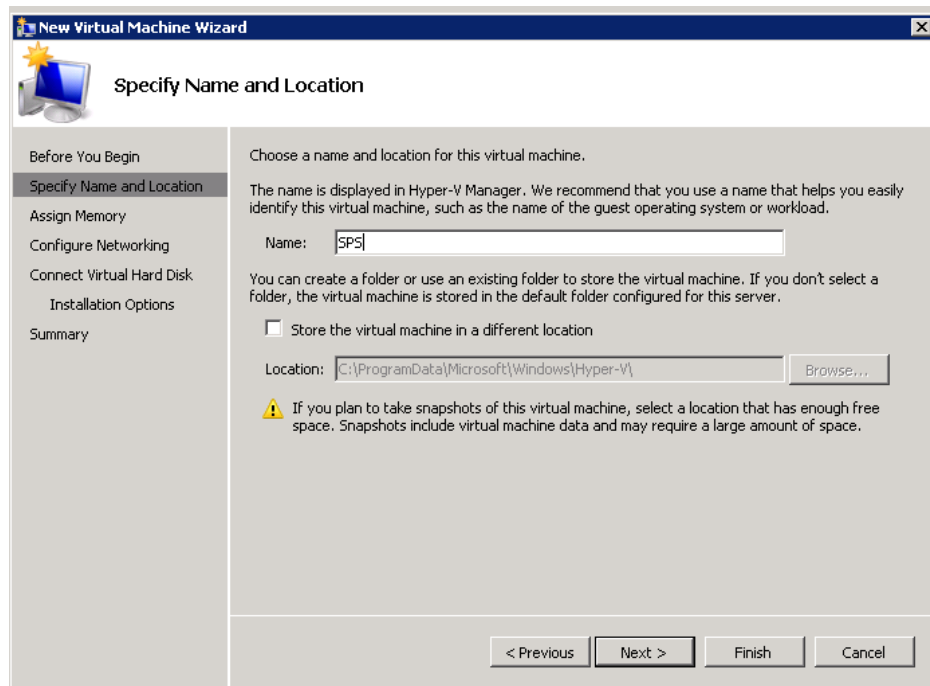
3. In the Actions pane, click **New > Virtual Machine**; the New Virtual Machine Wizard window appears.

Figure 2-2: New Virtual Machine Wizard - Before You Begin



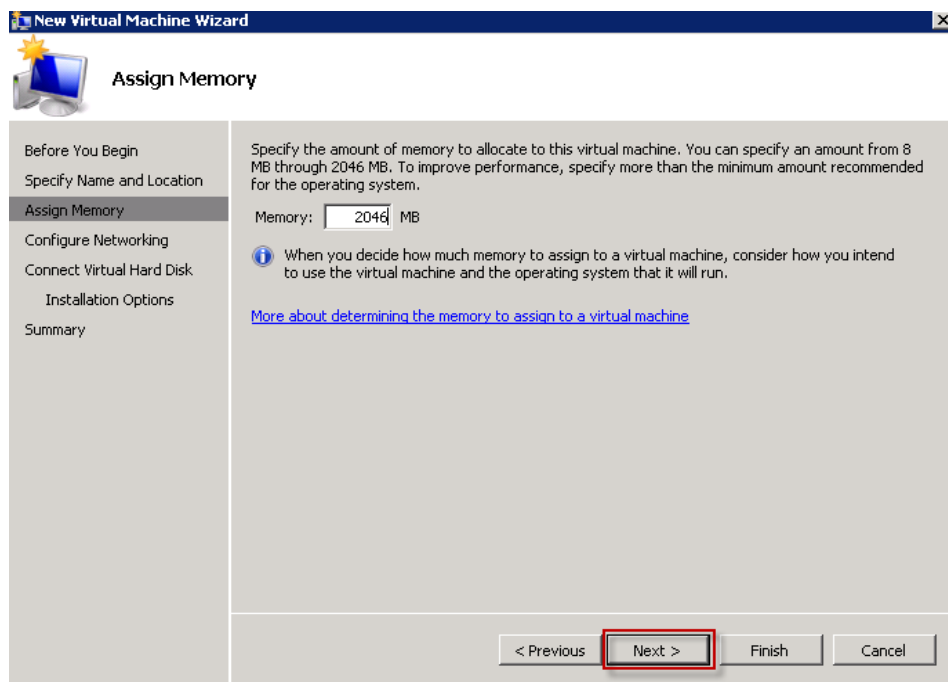
- Click **Next**; the Specify Name and Location window appears.

Figure 2-3: New Virtual Machine Wizard - Specify Name and Location



- In the 'Name' field, enter "SPS" as the name for your virtual machine.
- Click **Next**; the Assign Memory window appears.

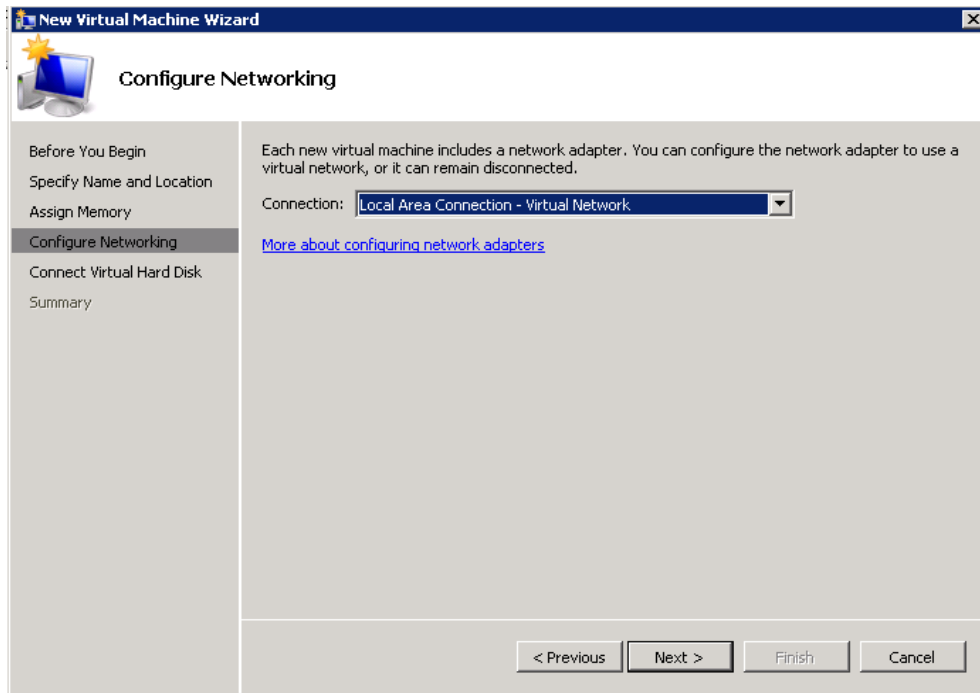
Figure 2-4: New Virtual Machine Wizard - Assign Memory



- In the 'Memory' field, enter "2046" MB (assuming your machine has at least 4GB of memory).

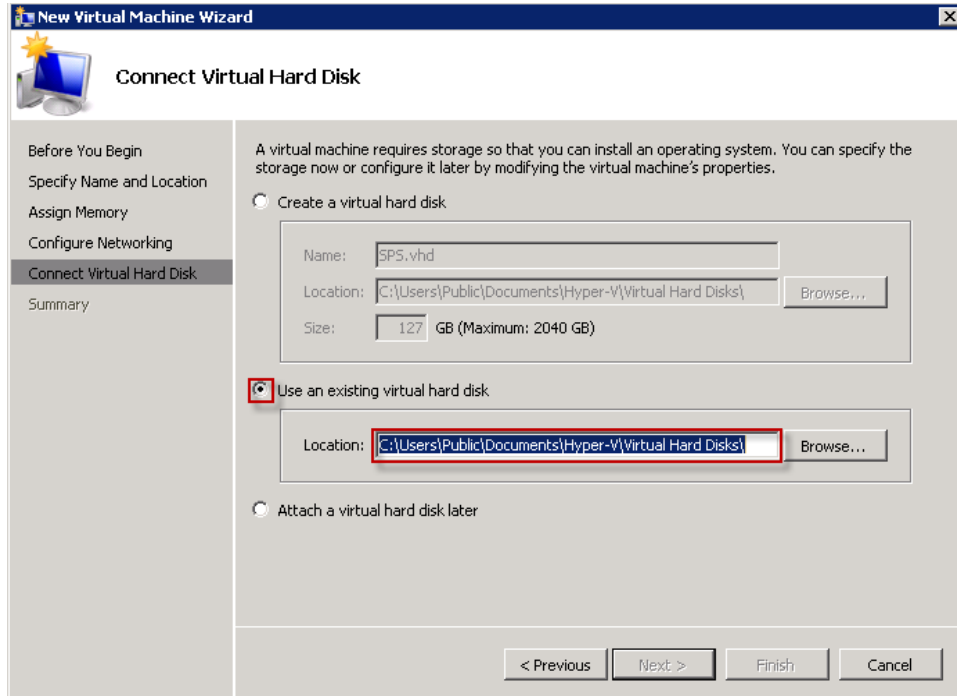
- Click **Next**; the Configure Networking window appears.

Figure 2-5: New Virtual Machine Wizard - Configure Networking



- From the 'Connection' drop-down list, select the correct network adapter.
- Click **Next**; the Connect Virtual Hard Disk window appears.

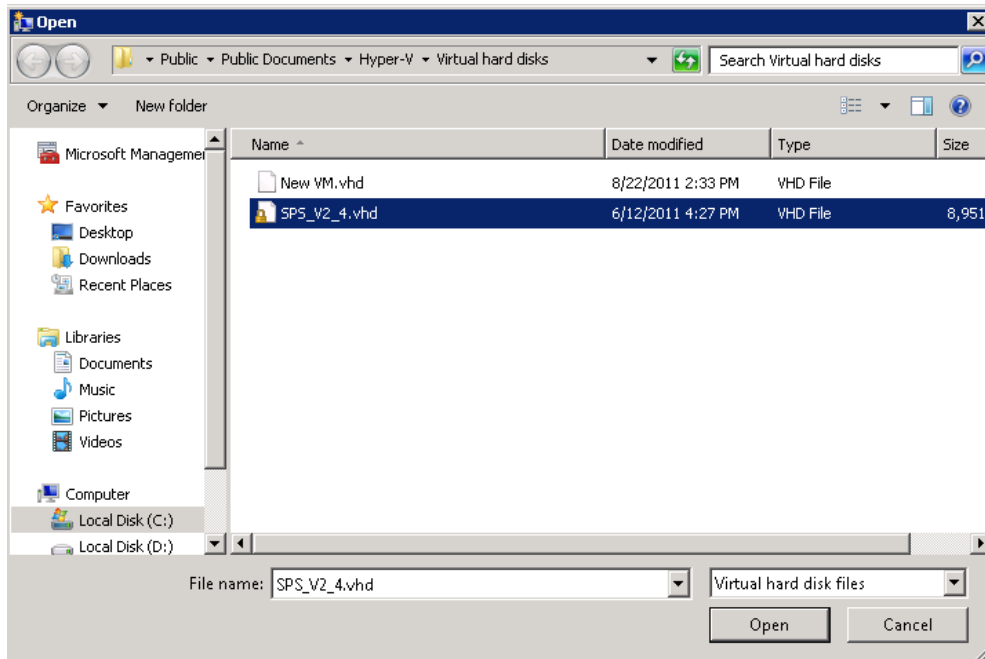
Figure 2-6: New Virtual Machine Wizard - Connect Virtual Hard Disk



- Select the **Use an existing virtual hard disk** option.

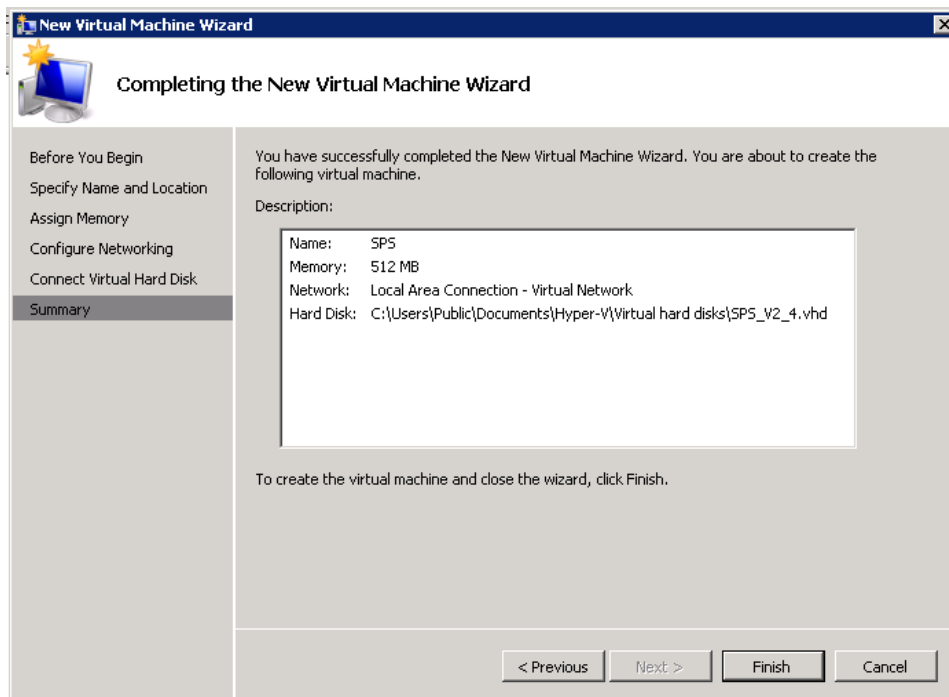
12. Click the **Browse** button, and navigate to the location where the SPS *vhd* file resides; the Open window appears.

Figure 2-7: New Virtual Machine Wizard - Open Window



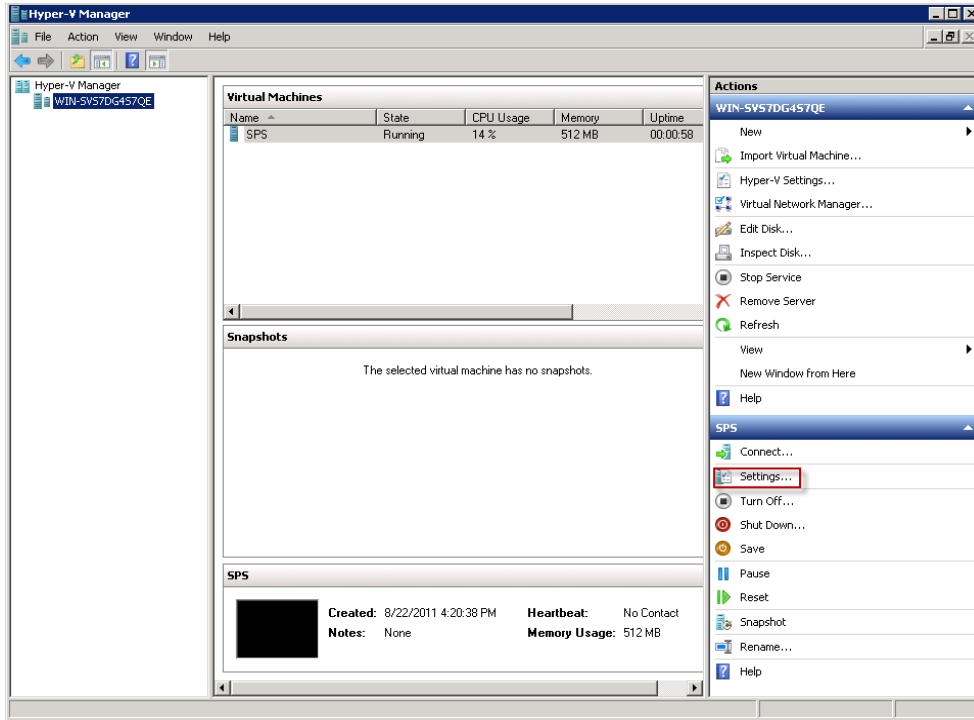
13. Select the SPS *vhd* file, and then click **Open**; the Connect Virtual Hard Disk window appears.
14. Click **Next**; the Completing the New Virtual Machine Wizard window appears.

Figure 2-8: New Virtual Machine Wizard – Completing the New Virtual Machine Wizard



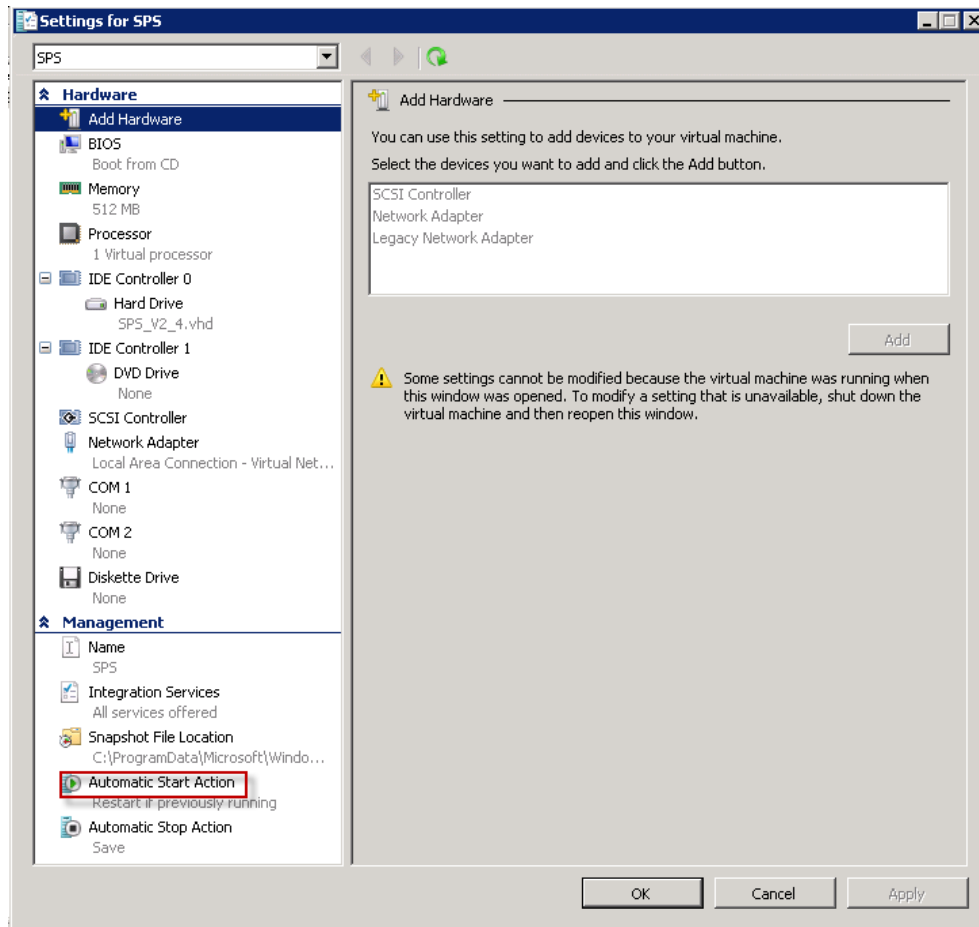
- Click **Finish**; the Microsoft Hyper-V Manager window appears, showing that the Virtual Machine is running.

Figure 2-9: Microsoft Hyper-V Manager Window



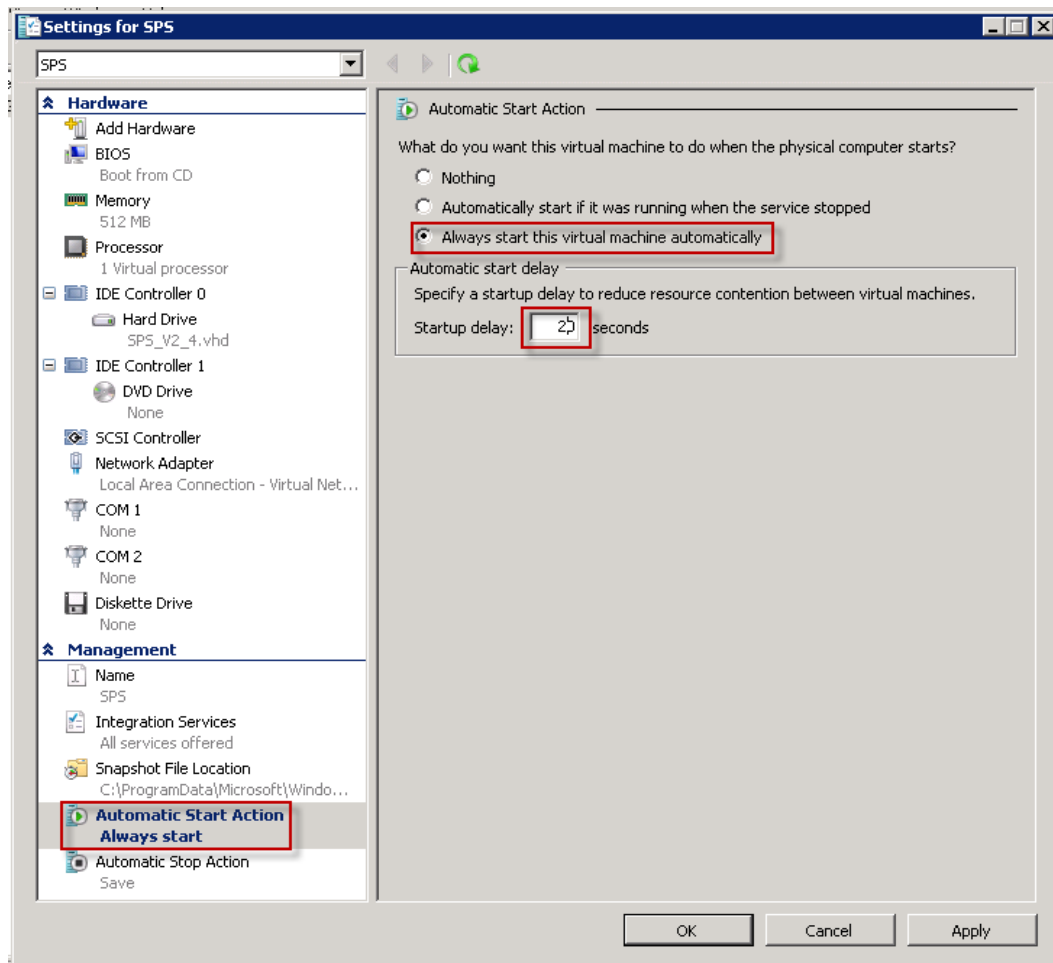
- In the Actions pane, click **Settings**; the Settings for SPS window appears.

Figure 2-10: Settings for SPS



17. In the left pane, click **Automatic Start Action**; the Automatic Start Action window appears.

Figure 2-11: Automatic Start Action



18. Select the **Always Start this virtual machine automatically** option.
19. In the 'Startup delay' field, enter **20** seconds.
20. Click **Apply** and then click **OK**.

Reader's Notes

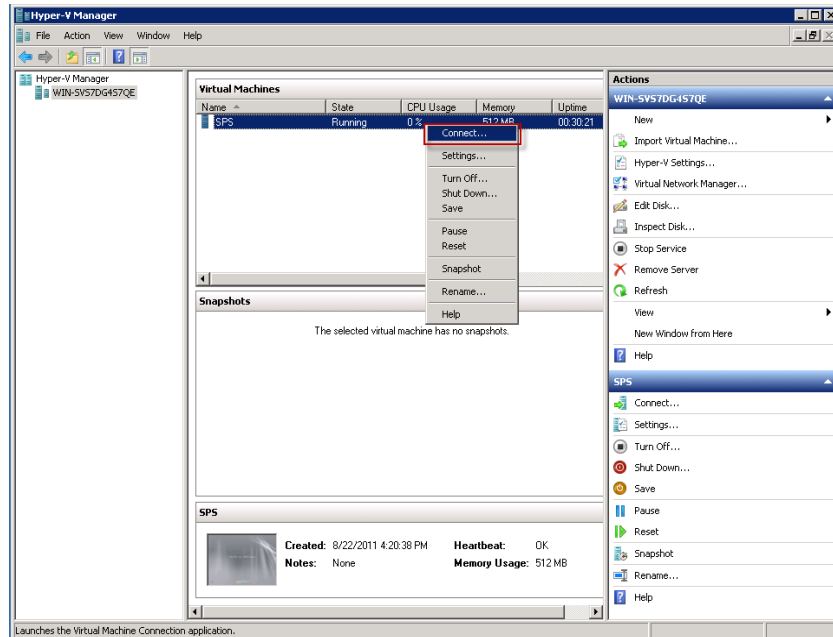
3 Obtaining the IP Address of the Virtual Machine

The following steps describe how to obtain the IP address of the virtual machine.

➤ **To obtain the IP address of the virtual machine:**

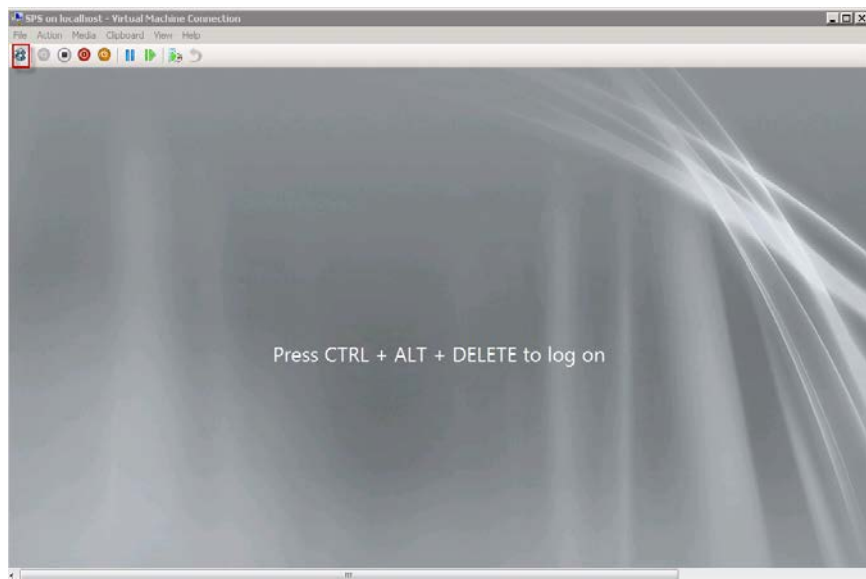
1. In the Microsoft Hyper-V Manager, in the **Virtual Machines** table, right-click the **SPS** virtual machine entry, and then from the shortcut menu, choose **Connect**; the SPS on the Local Host window appears.

Figure 3-1: Microsoft Hyper-V Manager Window – SPS



2. Click the **Ctrl+Alt+Del** button in the upper left corner of the window.

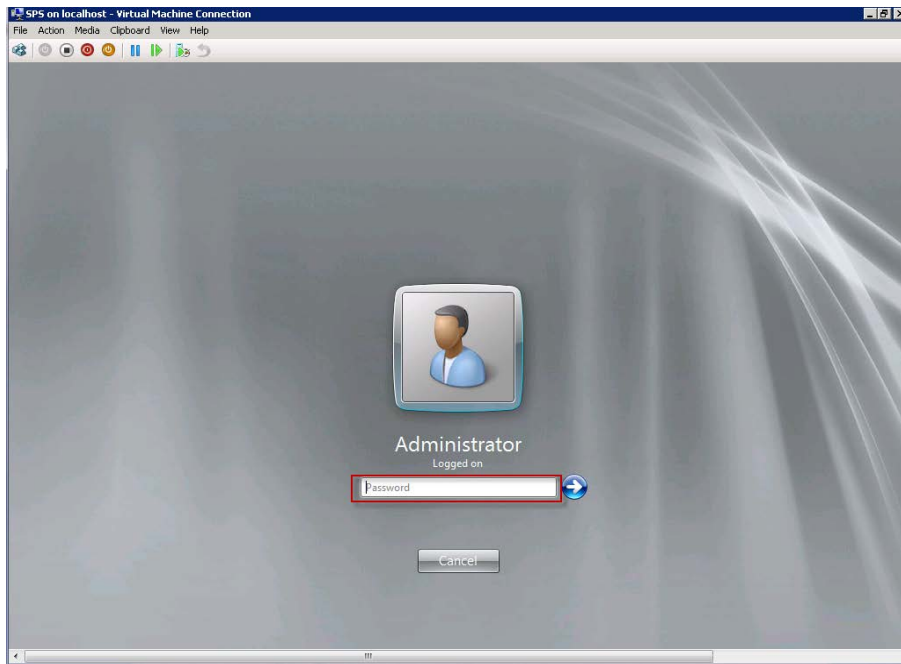
Figure 3-2: Ctrl+Alt+Del Window



The Administrator Login window appears.

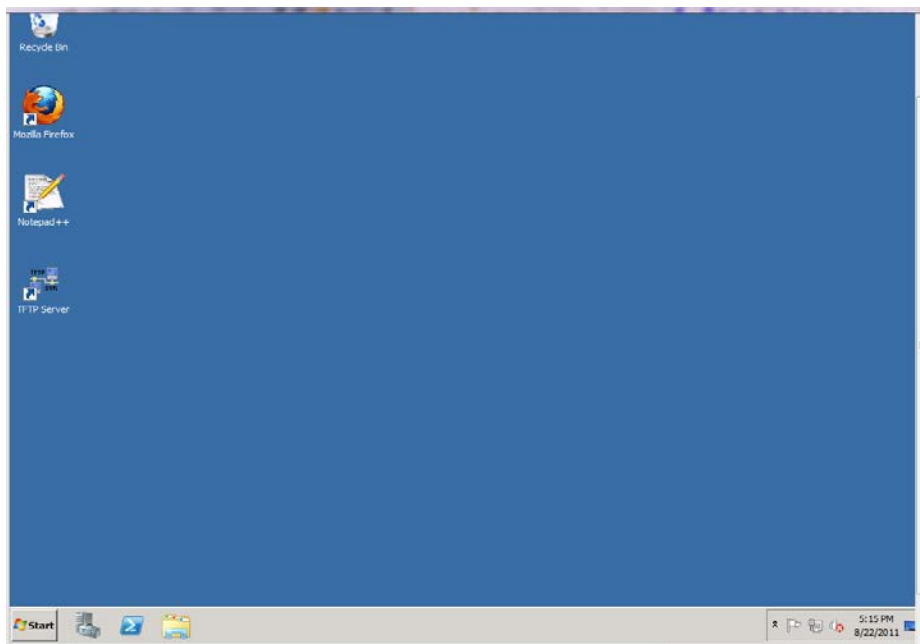
3. In the 'Password' field, enter "Pass123", and then click the arrow button.

Figure 3-3: Administrator Login Window



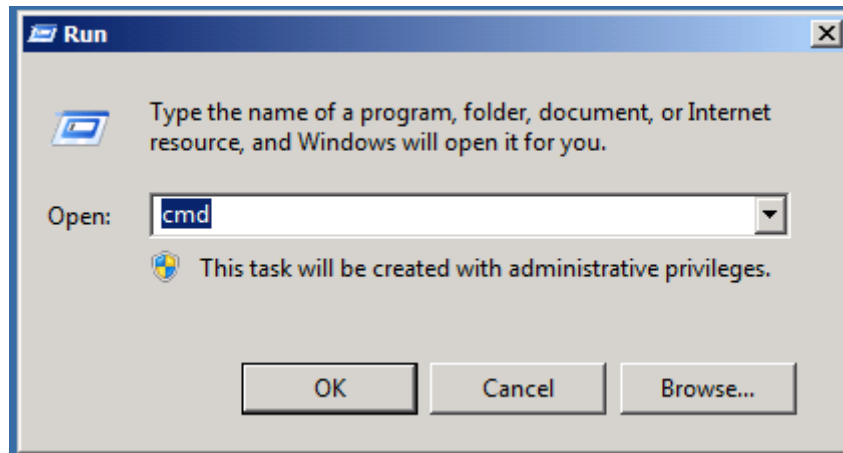
The following window appears:

Figure 3-4: Windows Main Screen



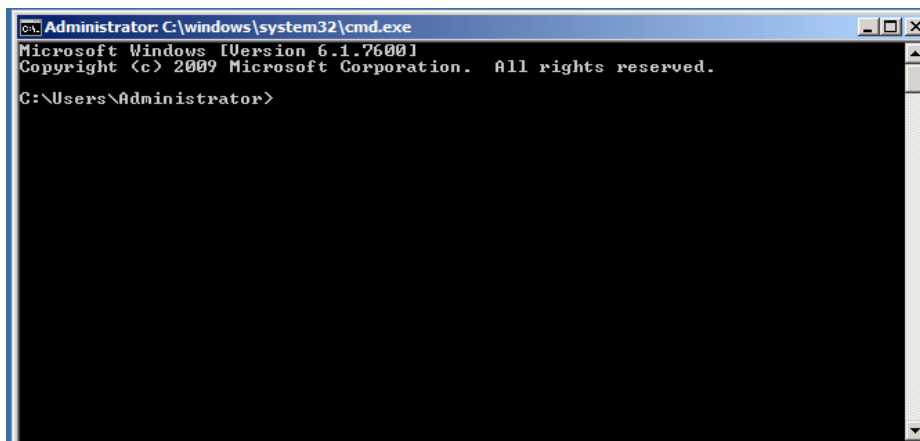
- Click **Start > Run**; the Run window appears.

Figure 3-5: Run Window



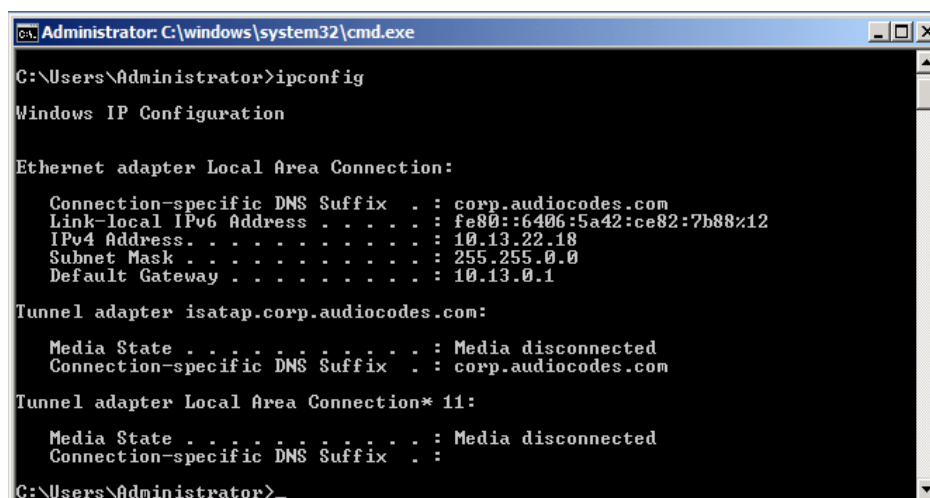
- In the 'Open' field, enter "cmd", and then click **OK**; the Administrator window appears.

Figure 3-6: Administrator Window



- At the DOS prompt, type "ipconfig" and then press Enter; the IP address appears on the screen.

Figure 3-7: IP Config



- Connect to this IP address as a Local Administrator. You are now ready for installation of the SPS.

Reader's Notes

4 Installing the SPS on the Virtual Machine

At this stage, you need to continue with the SPS installation. Refer to the *LTRT-28802 SPS for Lync Quick Start Guide*.



Note: The SPS license is associated with the installed system serial number. Installed and licensed SPS systems must not be cloned to a different Virtual Machine instance; otherwise the SPS license will be disabled.



Configuration Note