

Product Notice #0399



Preview Release of AudioCodes Teams - Direct Routing Survivable Branch Appliances

AudioCodes is excited to announce the release of AudioCodes Teams - Direct Routing Survivable Branch Appliances DR SBA Version 1.0 for Preview.

In addition to Direct Routing capabilities for Microsoft Phone System Cloud PBX, AudioCodes now offers Teams Direct Routing Survivable Branch Appliances. This appliance supports telephony services to the branch in the event of a WAN outage between the headquarters and the remote branch or between the branch and Office 365. As a result, this allows users to continue to make and receive PSTN/mobile calls through the branch SBA.

AudioCodes' family of Direct Routing Survivable Branch Appliances (DR SBAs) is a line of enterprise-class embedded Session Border Controller, Gateway and Virtual Appliance that is designed to ensure access to data and voice services in the event of a WAN outage in Microsoft Teams topologies. AudioCodes DR SBAs are an essential element in Microsoft Teams deployments and fully certified by Microsoft.

AudioCodes adds Microsoft Teams Direct Routing capabilities to Survivable Branch Appliances that fit any enterprise location size, providing HQ and/or branch office voice resiliency — with TDM and SBC.

Features

- Reliable and high-performance SIP trunk connectivity
- A variety of platforms that address the customer's Environment and Size:
 - Open server platform for hosting additional value-added services and applications
 - Virtual Appliance that can be hosted on the customer Data Center
- Direct Routing certification by Microsoft
- Local User-to-User call, PSTN breakout and IP-PBX connectivity at HQ or branch offices
- Fully interoperability with AudioCodes SBC's, supporting emergency calling standards, including E911/ ELIN and Local Media Optimization (LMO)
- Supports local resiliency for analog line
- Support tools for restore
- Monitoring through AudioCodes' One Voice Operation Center

Affected Products

New CPN Items:

- **Mediant 800B SBA:**
 - M800B-ESBC-SBA-TMS: Mediant 800B SBC Survivable Branch Appliance for Microsoft Teams
 - M800B-1ET4S-SBA-TMS: Mediant 800B Survivable Branch Appliance for Microsoft Teams with a single E1/T1 and 4 FXS interfaces
 - M800B-2ETF4S-SBA-TMS: Mediant 800B Survivable Branch Appliance for Microsoft Teams with 2 E1/T1 and 4 FXS interfaces
 - M800B-4S4O4B-SBA-TMS: Mediant 800B Survivable Branch Appliance for Microsoft Teams with 4 BRI, 4 FXS and 4 FXO interfaces
- **Mediant 800C SBA:**
 - M800C-2ET-SBA-TMS-EO: Mediant 800C Survivable Branch Appliance for Microsoft Teams with 2 E1/T1 and 4 FXS interfaces
 - M800C-4ET-SBA-TMS-EO: Mediant 800C Survivable Branch Appliance for Microsoft Teams with 4 E1/T1 and 4 FXS interfaces
 - M800C-SBC-SBA-TMS-EO: Mediant 800C SBC Survivable Branch Appliance for Microsoft Teams
- **Mediant 1000B SBA:**
 - M1KB-SBA-TMS-ES: Mediant 1000B/OSN3C Survivable Branch Appliance for Microsoft Teams
 - M1KB-SBA-TMS-EO: Mediant 1000B/OSN4B Survivable Branch Appliance for Microsoft Teams
 - M1KB-SBA-TMS-ES-KIT: OSN3C kit for Mediant 1000B SBA for Microsoft Teams
 - M1KB-SBA-TMS-EO-KIT: OSN4B Kit for Mediant 1000B SBA for Microsoft Teams
- **Virtual Appliance SBA (Q1/21)**

Migration Plan from Skype For Business SBA to Teams SBA:

The table below lists which existing Skype For Business Mediant SBA platforms can be upgraded to Teams SBA (including required upgrade kit):

SBA Platform (CPN)	Upgradeable	Required H/W Change	Upgrade Kit
Mediant 1000B SBA			
OSN3 2G RAM with HDD (M1KB-XXX-SBA)	X	N/A To identify OSN memory size, see "View OSN Memory Size Guidelines" below	
OSN3 2G RAM with SSD (M1KB-XXX-SBA-ES or M1KB-XXX-SBA-SSD)	X	N/A To identify OSN memory size, see "View OSN Memory Size Guidelines" below	
OSN3 4G RAM with HDD (M1KB-XXX-4G-SBA)	X	N/A To identify OSN memory size, see "View OSN Memory Size Guidelines" below	
OSN3 4G RAM with SSD (M1KB-XXX-4G-SBA-SSD)	√	N/A To identify OSN memory size, see "View OSN Memory Size Guidelines" below	<ul style="list-style-type: none"> • M1KB-SBA-TMS-UP-SW • Windows 2019 OS license • Dongle with DR SBA image (for backup)
OSN3B (M1KB-XXX-SBA-ES)	√	N/A	<ul style="list-style-type: none"> • M1KB-SBA-TMS-UP-SW • Windows 2019 OS license • Dongle with DR SBA image (for backup)
OSN3C (M1KB-XXX-SBA-ES)	√	128 G SSD	<ul style="list-style-type: none"> • M1KB-SBA-TMS-UP-SW • Windows 2019 OS license • Dongle with DR SBA image (for backup)
OSN4B (M1KB-XXX-SBA-EO or M1KB-XXX-SBA-EO-X)	√	128/256 G SSD	<ul style="list-style-type: none"> • M1KB-SBA-TMS-UP-SW • Windows 2019 OS license • Dongle with DR SBA image (for backup)
Mediant 800 SBA			
OSN2 with 2G RAM (M800-xxx-SBA or M800B-xxx-SBA)	×	N/A To identify OSN memory size, see "M800 Mediant 800B with OSN2" below or "View OSN Memory Size Guidelines" below.	-

SBA Platform (CPN)	Upgradeable	Required H/W Change	Upgrade Kit
OSN2 with 4G RAM (M800-xxx-SBA or M800B-xxx-SBA)	√	N/A To identify OSN memory size, see “M800 Mediant 800B with OSN2” below or “View OSN Memory Size Guidelines” below.	<ul style="list-style-type: none"> • M800-SBA-TMS-UP • Windows 2019 OS license • Dongle with DR SBA image (for backup)
OSN5 with 2G RAM (M800-xxx-SBA-N or M800B-xxx-SBA-N)	×	N/A	-

- **Mediant 800B with OSN2:**

The table below lists all Mediant 800B SBA hardware P/Ns with their hardware revisions whose OSN2 is 2-GB RAM (and therefore, cannot be upgraded to Teams SBA).

Hardware P/N	H/W Rev. (inclusive)	Description
GGWM00071	P01-04	Mediant 800 SBA 4FXS 4FXO 2LAN w OSN w/o PoE w Fans
GGWM00073	P01-06	Mediant 800 SBA 1PRI 12LAN w OSN w PoE w Fans
GGWM00074	P01-06	Mediant 800 SBA 1PRI 4FXS 12LAN w OSN w PoE w Fans
GGWM00075	P01-05	Mediant 800 SBA 4FXS 4FXO 12LAN w OSN w PoE w Fans
GGWM00076	P01-05	Mediant 800 SBA 4FXS 4FXO 4BRI 12LAN w OSN w PoE w Fans
GGWM00091	P01-04	Mediant 800 SBA 4FXS 4FXO 2LAN w OSN w/o PoE w Fans w T1 Wan
GGWM00099	P01-03	Mediant 800 SBA 4FXS 8FXO 4LAN w OSN w/o PoE w Fans
GGWM00118	P01-03	Mediant 800 SBA 4BRI 4LAN w OSN w/o PoE w Fans
GGWM00122	P01-03	Mediant 800 SBA 4BRI 8FXS 4LAN w OSN w/o PoE w Fans
GGWM00170	P01	M800B/SBA/4LAN/E1T1/Celeron
GGWM00171	P01	M800B/SBA/4LAN/E1T1/4FXS/Celeron
GGWM00172	P01	M800B/SBA/4LAN//E1T1/8FXS/Celeron
GGWM00173	P01	M800B/SBA/4LAN/4FXS/4FXO/Celeron
GGWM00174	P01	M800B/SBA/4LAN/4FXS/4FXO/4BRI/Celeron
GGWM00175	P01	M800B/SBA/4LAN/4FXS/8FXO/Celeron
GGWM00176	P01	M800B/SBA/4LAN/4FXS/4FXO/T1WAN/Celeron
GGWM00195	P01	M800B/SBA/4FXS/4FXO/Celeron/AutoAttendant
GGWM00196	P01	M800B/SBA/4FXS/E1T1/Celeron/AutoAttendant

- **Mediant 1000B:**

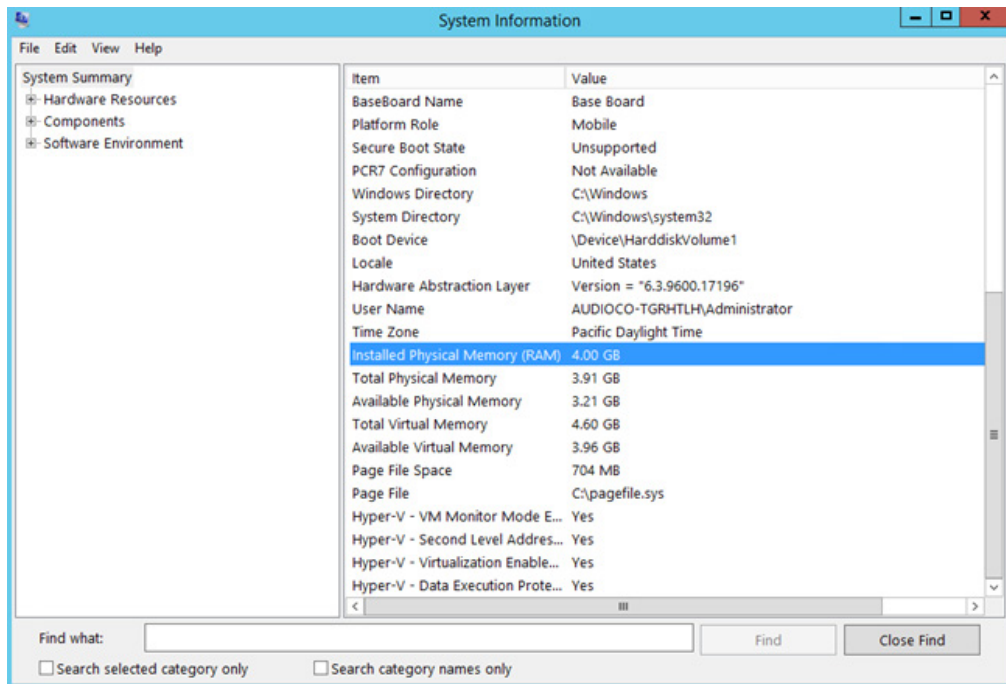
The OSN card is located on the rear panel (picture below), customer can read the OSN type



Note: OCN3 includes several RAM size and Hard disk types, see “View OSN memory size Guidelines”

- **View OSN Memory Size Guidelines:**

1. Connect to Mediant 800/Mediant 1000 SBA through Remote Desktop Protocol (RDP).
2. Run **Minfo32**.
3. Open the System Information window, and then view the OSN Type (available for part of the HW), CPU type and physical memory of the OSN server, as shown in the example below:



If you have any questions, contact us at
<https://www.audiocodes.com/corporate/offices-worldwide>

AudioCodes Ltd. | 1 Hayarden Street | Airport City | Lod | Israel | +972-3-976-4000

Join our mailing list for news and updates