

Product Notice 0160

SBA and SPS Configuration to Reduce OSN CPU Load

Notice Type:

This Product Notice is **External**.

Notice Subject:

SBA and SPS configuration to reduce OSN CPU load.

Affected Product Family:

Survivable Branch Appliance (SBA) and SPS applications hosted on the same OSN server platform.

Notice Date:

November 18, 2012.

Notice Effective Date:

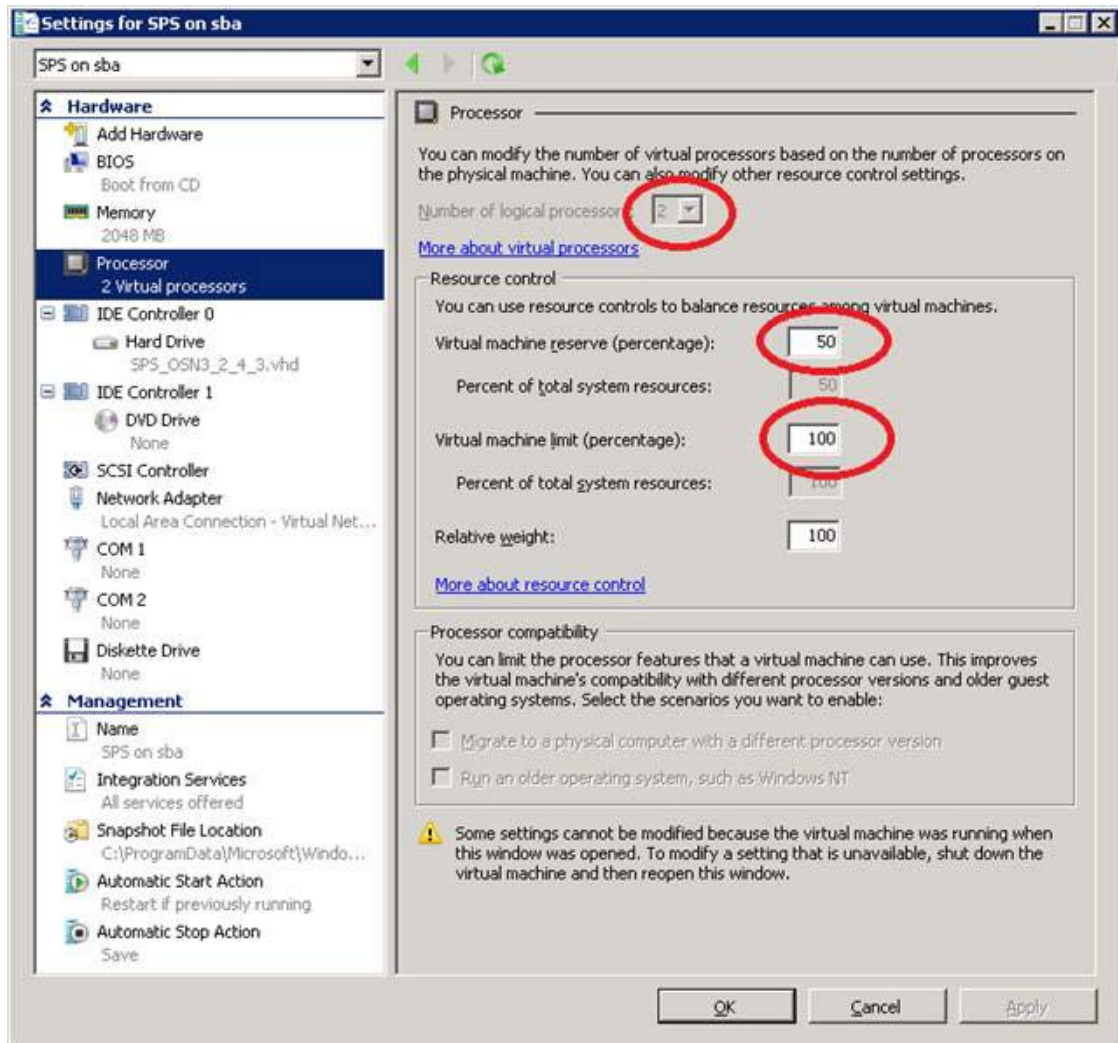
November 18, 2012.

Notice Details:

When the SPS and SBA software are installed on the same OSN module, the OSN central processing unit (CPU) is shared between these two software applications. Thus, it is crucial that the following configuration settings are done in order to significantly reduce the CPU load as well as maximize the number of concurrent calls supported by the SPS application:

1. As the SPS operates only with the G.711 Mu-Law voice codec, set the gateway to operate with Mu-Law toward the SBA (and not A-Law).

2. Ensure that the Hyper-V for the SPS application is configured as shown in the figure below:



3. Ensure that Microsoft® Lync™ is configured to operate with Media Bypass (i.e. RTP media bypasses the Mediation Server on the SBA).
4. On the SPS core, enable Media Bypass for incoming calls to the SPS from the gateway:
 - a. Add the following parameter to the SpsLync.exe.config file located in C:\Program Files\AudioCodes\SPS\SPS Core\SpsLync.exe.config:


```
MediationServerMediaBypassDisable="false"
```
 - b. Reset the SPS core service.
5. Verify that the system is operating properly; in other words, incoming calls bypass the SBA Mediation Server, and no transcoding occurs on the Mediation Server and SPS for both call directions (to/from PSTN).